

# NEW PRODUCT INFO

PRELIMINARY INFORMATION. SPECS & IMAGES SUBJECT TO CHANGE.

## ISOLINE-AX

### Active Column PA Systems

Discrete and punchy - Portable and practical! A self-contained live sound solution for live performance. The hardest choice to make is..... 'which model'?

'Practicality' was a key goal for the design team. To make an active system with features that make setups and break-downs easy. The column uses direct coupling to make connection fast. The column itself is also rotatable by +15% / -15% to ensure the output really covers the audience.

With microphone, line, USB-drive and Bluetooth inputs, the system also reduces the need for an external mixer. In addition, two Isoline-AX arrays can be paired wirelessly using TWS technology.

Importantly, the latest HF technology has been deployed and BOTH Isoline-AX models feature a mini EVO-Fold waveguide 'evolved' from the incredible WLA-1 Hybrid Curvature Array system.

**ISOLINE-X510. 10.0" Sub, 5 x 3.0" plus 1 x 1.0" HF**

**850 W Continuous**

**1700 W Peak**

**ISOLINE-X912. 12.0" sub, 9 x 3.0" plus 2 x 1.0" HF**

**1200 W Continuous**

**2400 W Peak**

## FEATURES

- Mini EVO-Fold waveguides
- +15° / -15° rotatable column
- Direct coupling between columns. Tidy!
- Bluetooth input
- Internal USB mp3 player
- 2 channel internal mixer
- Class D amplification
- Portable design

## AVAILABILITY

ISOLINE-AX Series

Shipping in Q3 2023

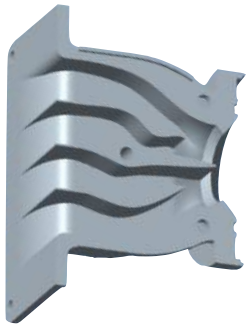
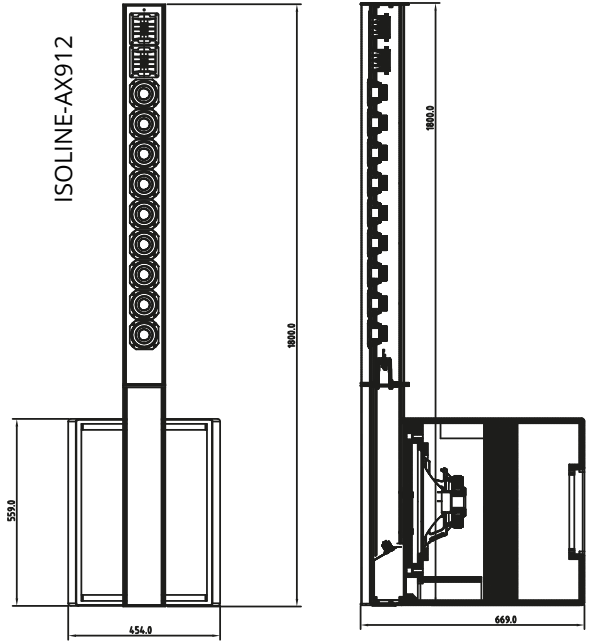
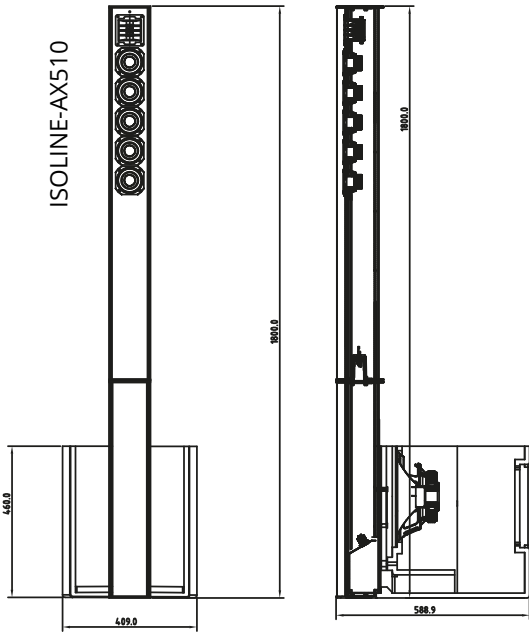


ISOLINE-AX510

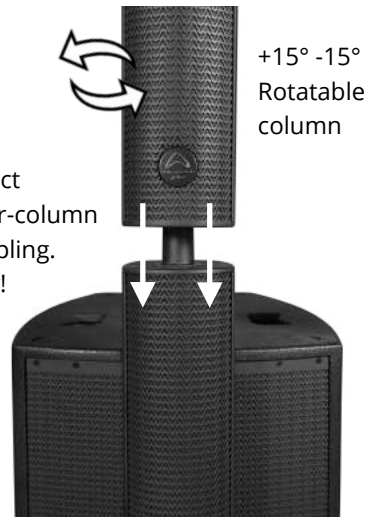
ISOLINE-AX912

454.0

# UP CLOSE



Mini EVO-Fold waveguide ensures system phase coherence



- 2 channel mixer plus Bluetooth
- USB mp3 player
- Class D amplification
- Balanced Mic / Line inputs
- Balanced link output

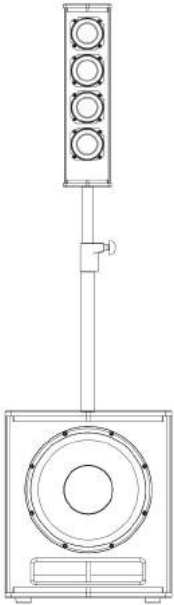


Easy column fixings plus accessible speakON compatible connectors



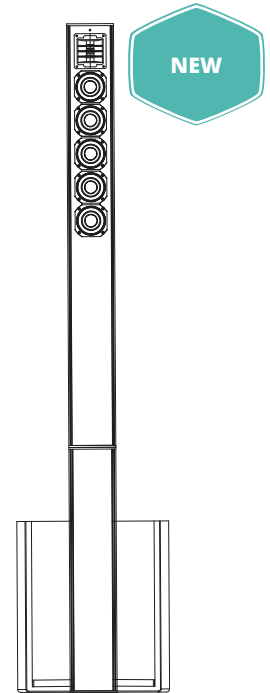
# WHATS CHANGED?

## ISOLINE-410

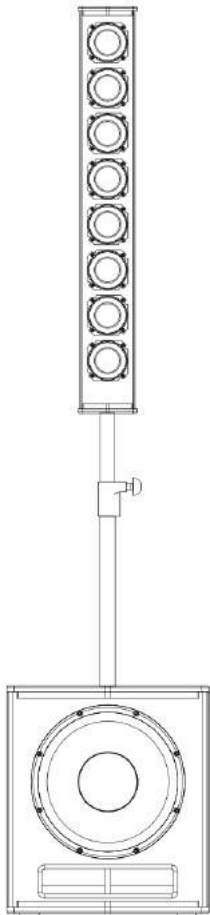


	ISOLINE-410	ISOLINE-AX510
Direct coupling design	NO	<b>YES</b>
HF Compression driver	NONE	<b>ONE</b>
mini EVO-Fold waveguide	NONE	<b>ONE</b>
Wide-range drivers	4	<b>5</b>
Subwoofer construction	MDF	<b>Birch plywood</b>
Column construction	MDF	<b>Aluminium</b>
Bluetooth TWS Linking	NO	<b>YES</b>
Continuous power	400 W	<b>850 W</b>
Peak power	800 W	<b>1700 W</b>
Max SPL @ 1m	121 dB	<b>124 dB</b>
Internal USB mp3 player	NO	<b>YES</b>
Stackable subs without changing column height	NO	<b>YES</b>

## ISOLINE-AX510

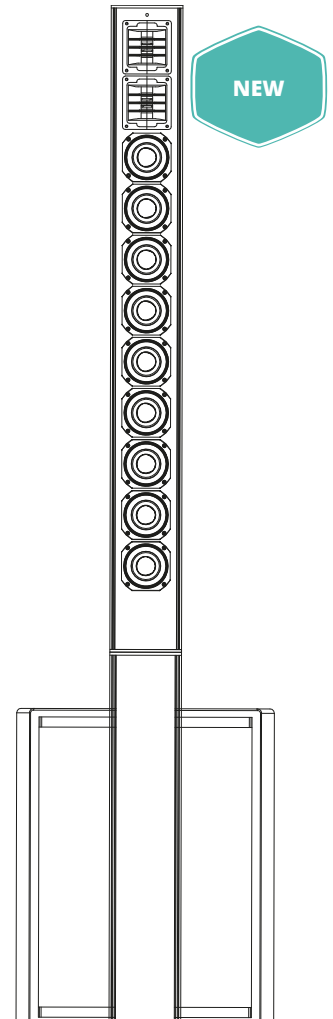


## ISOLINE-812



	ISOLINE-812	ISOLINE-AX912
Direct coupling design	NO	<b>YES</b>
HF Compression driver	NONE	<b>TWO</b>
mini EVO-Fold waveguide	NONE	<b>TWO</b>
Wide-range drivers	8	<b>9</b>
Subwoofer construction	MDF	<b>Birch plywood</b>
Column construction	MDF	<b>Aluminium</b>
Bluetooth TWS Linking	NO	<b>YES</b>
Continuous power	600 W	<b>1200 W</b>
Peak power	1200 W	<b>2400 W</b>
Max SPL @ 1m	124 dB	<b>129 dB</b>
Internal USB mp3 player	NO	<b>YES</b>
Stackable subs without changing column height	NO	<b>YES</b>

## ISOLINE-AX912



# SPECIFICATIONS

Model Name	ISOLINE-AX510	ISOLINE-AX912
System Type	Active	Active
Frequency Response (+/-3 dB)	50 Hz-20 kHz	40 Hz-20 kHz
Frequency Range (-10 dB)	45 Hz-20 kHz	35 Hz-20 kHz
Sensitivity Maximum SPL @1m	124 dB	129 dB
<b>Low Frequency Transducer</b>		
Size ( mm / inches)	254 mm / 10"	305 mm / 12"
Coil Size ( mm / inches)	51.3 mm / 2"	51.3 mm / 2"
Impedance	4 Ω	4 Ω
<b>Column Transducer Type</b>		
Coil Size ( mm / inches)	5 x 3" Wide-band Drivers	9 x 3" Wide-band Drivers
Type	32.5 mm / 1.3"	32.5 mm / 1.3"
Waveguide Type	1 x 1" High Frequency drivers	2 x 1" High Frequency drivers
Coil Size ( mm / inches)	EVO-Fold	EVO-Fold
Diaphragm Material	25.4 mm / 1"	25.4 mm / 1"
Impedance	PEI	PEI
Nominal Coverage (H x V)	8 Ω	4 Ω
	120° x 30°	120° x 20°
<b>Electronics</b>		
Low-Frequency Power Amplifier RMS/Peak Watts	550/1100 W	600/1200 W
High-Frequency Power Amplifier RMS/Peak Watts	300/600 W	600/1200 W
Amplifier Class	Class D	Class D
Controls--D-EQ	±9 dB	±9 dB
Amplifier, Power on, thermal, low line voltage Protection	Yes	Yes
Driver Protection	Independent LF/HF Limiters	Independent LF/HF Limiters
DC, Short Protection	Yes	Yes
Clip Limiter	Yes	Yes
Limiter Indicator. Power Indicator	LED	LED
Subwoofer to Column	2 x speakON	2 x speakON
<b>Inputs</b>		
Input Sensitivity	Switchable balanced mic or line level input	Switchable balanced mic or line level input
Input A (Line / Mic Balanced)	Mic: -40 dBu Line: 0 dBu	Mic: -40 dBu Line: 0 dBu
Input B (Line / RCA / USB / Bluetooth)	0 dB	0 dB
Maximum Input Level	10 dBu	10 dBu
Input Connector	2 x XLR Jack Combi, RCA	2 x XLR Jack Combi, RCA
Input Impedance	Balanced:20 KΩ Unbalanced:10 KΩ	Balanced:20 KΩ Unbalanced:10 KΩ
Input A (Line / Mic Balanced)	22 kΩ Balanced and 11 kΩ Unbalanced	22 kΩ Balanced and 11 kΩ Unbalanced
Input B (Line / RCA / USB / Bluetooth)	22 kΩ Balanced and 11 kΩ Unbalanced	22 kΩ Balanced and 11 kΩ Unbalanced
Maximum Input Level	10 dBu	10 dBu
Line Output Connector	Female XLR	Female XLR
Impedance Balanced	Balanced: 50 Ω Unbalanced:100 Ω	Balanced: 50 Ω Unbalanced:100 Ω
Loop Gain	Line:36 dB	Line:36 dB
<b>Power Supply</b>		
AC Power Options	High Efficiency Switching Dual Mode Power Supply	High Efficiency Switching Dual Mode Power Supply
Power On Indicator	AC100-120 V~/200-240 V~,50/60 Hz	AC100-120 V~/200-240 V~,50/60 Hz
Enclosure(Subwoofer)	Limiter Indicator: Red LED	Limiter Indicator: Red LED
Enclosure Material and finish	Subwoofer Plywood cabinet,resistant black	Subwoofer Plywood cabinet,resistant black paint,metal
Colour Options	Black	Black
Grille Material & Finish	Steel	Steel
<b>Dimensions and Weight</b>		
Dimensions - Unpacked ( mm / inches):		
Column (HxWxD)	1210x126x145 mm/47.64" x4.96" x5.71 "	1210x126x145 mm/47.64" x4.96" x5.71 "
Base Column (HxWxD)	590x126x145 mm/23.3" x 4.96" x5.71 "	590x126x145 mm/23.3" x 4.96" x5.71 "
Subwoofer (HxWxD)	460x409x496 mm/18.1" x16.1" x19.5"	559x454x576.1 mm /22"x17.87"x22.68"
Dimensions - Packed ( mm / inches):		
Column + Base + speakON Cable (HxWxD)	1280x385x210 mm/50.4" x15.2" x8.27"	1280x385x210 mm/50.4" x15.2" x8.27"
Subwoofer(HxWxD)	535x480x570 mm/21.06" x 18.9"x22.44"	634x530x650 mm /24.96"x20.87"x25.59"
<b>Weight</b>		
Column Net Weight (kg / lbs)	9.2 kg / 20.24 lbs	10.5 kg / 23.1 lbs
Base Net Weight (kg / lbs)	4.3 kg / 9.46 lbs	4.3 kg / 9.46 lbs
Column + Base + speakON Cable Net /Gross Weight (kg / lbs)	14.0 kg/ 16.2 kg / 30.8 lbs/ 35.64 lbs	15.3 kg/ 17.5 kg / 33.7 lbs/ 38.5 lbs
Subwoofer Net /Gross/ Weight (kg / lbs)	23.2 kg / 25.5 kg /51.04 lbs/ 56.1 lbs	31.0 kg /34.3 kg/ 68.2 lbs/75.46 lbs

