

Install

QFLEX 8

Digitally Steerable Powered Column Array Loudspeaker with 8 Independently Controlled Drivers, Integrated DSP and BeamEngine GUI Control for Installation Applications

- Digitally steerable column array speaker system provides extremely high intelligible speech reinforcement
- 8 4" full range drivers with individual 100 Watt Class D amplifiers and integrated cutting edge DSP
- Class leading $\pm 70^\circ$ steering control with 8 channels of integrated DSP and amplification
- Intuitive BeamEngine GUI for asymmetric pattern creation and even near and far field SPL coverage
- For installation applications with coverage distances up to 20 m (66')
- Fully PA/VA compliant
- Fully integrated amplified speaker system connects to other TANNOY VNET enabled products
- Accessory options for constant voltage systems, Audinate Dante* digital audio networks, Ethernet control, and AES3 break in interface
- Architecturally styled aluminium enclosure with a semi matt white painted finish
- Corrosion resistant aluminium perforated grille
- Included custom brackets allow quick and accurate installation
- AES3 input and link connections on RJ-45 connectors with internal sample rate conversion up to 96 kHz
- 10-Year Warranty Program*
- Designed and engineered in the U.K.

The QFLEX 8 is a powered, digitally steerable multi-channel, column array loudspeaker designed as a complete solution for installed applications with challenging acoustics, such as houses of worship, transportation hubs, convention centres, conference facilities, shopping malls, performing arts centres and museums. The heart of the system is our proprietary VNET loudspeaker networking platform, which comprises both software and hardware DSP components that produce extremely-high speech intelligibility and complete loudspeaker system diagnostics and monitoring.



Class-Leading Control

While many competing steerable arrays allow only a modest steering range across specific frequencies, the QFLEX 8 has a class-leading $\pm 70^\circ$ steering control, plus 8 channels of integrated DSP and amplification for consistent and highly intelligible full-range voice and music applications.

*Dante is a trademark of Audinate Pty Ltd. All third-party trademarks are the property of their respective owners. Their use neither constitutes a claim of the trademark nor affiliation of the trademark owners with MUSIC Tribe. Product names are mentioned solely as a reference for compatibility, effects and/or components. Warranty details can be found at musictribe.

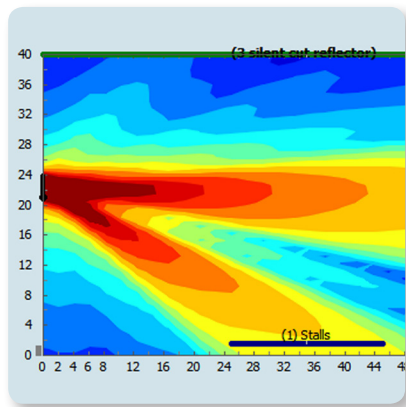
Install

QFLEX 8

Digitally Steerable Powered Column Array Loudspeaker with 8 Independently Controlled Drivers, Integrated DSP and BeamEngine GUI Control for Installation Applications

A Revolution in Sound Technology

The first digitally steerable column array loudspeaker of its kind, QFLEX 8's revolutionary BeamEngine technology steers the the full-range sound away from surfaces that cause reflections. The intuitive BeamEngine GUI allows the designer to specify target areas. Rather than only providing a limited palette of opening and steering angles, the BeamEngine GUI generates a steering algorithm that is tailored for that specific area. The resulting asymmetrical pattern delivers similar sound pressure levels (SPL) in both the near and far field for superb coverage and intelligibility – all in a very aesthetically-pleasing package.

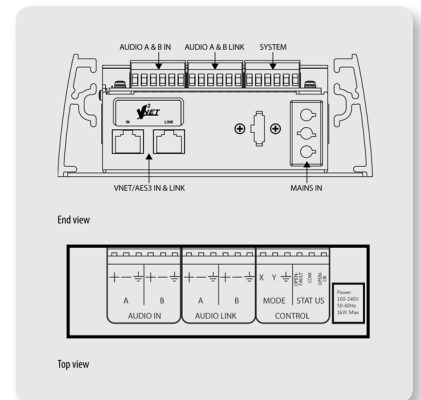


Drivers, Power & DSP

The QFLEX 8 column array loudspeaker comprises eight 4" full-range drivers, each with its own dedication 100-Watt Class D amplifier. QFLEX 8's drivers provide digitally-steerable coverage for distances up to 20 m (66'). A robust internal DSP engine works seamlessly with the proprietary VNET and BeamEngine software, both of which are available for free download [here](#).

Scalability

Designed to provide premium-grade performance as a standalone self-powered column array, QFLEX 8 is also an exceptional choice for multiple-column configurations consisting of other TANNOY VNET enabled products. Implementation of the network between nodes is via high-quality rugged Neutrik Ethercon connectors, which are compatible with standard RJ45 plugs, and CAT5 cable. Each speaker has a unique address for auto-location on the network.



Install

QFLEX 8

Digitally Steerable Powered Column Array Loudspeaker with 8 Independently Controlled Drivers, Integrated DSP and BeamEngine GUI Control for Installation Applications



System Add-Ons

A wide range of accessory options are available for the VNET-enabled QFLEX 8 including: The VNET ETHERNET INTERFACE; VNET USB RS232 INTERFACE; VNET2-AES INTERFACE, VNET INTERFACE POWER SUPPLY; VNET INTERFACE RACK MOUNT; as well as the QFLEX ISOLATOR, for eliminating potential ground/hum issues.

PA/VA Compliant

Engineered for the ultimate in reliability, QFLEX 8's high level of voice intelligibility and telemetry functionality renders it fully compliant in any life safety or mass notification environment.



Build Quality

The architecturally styled aluminium enclosure is finished in a semi matt white paint with a corrosion resistant aluminium perforated grille. The QFLEX 8 includes the necessary hardware for quick and accurate installation. Mains input and output link power connectors are Neutrik powerCON.

Install

QFLEX 8

Digitally Steerable Powered Column Array
Loudspeaker with 8 Independently Controlled
Drivers, Integrated DSP and BeamEngine GUI
Control for Installation Applications

You Are Covered

We always strive to provide the best possible Customer Experience. Our products are made in our own [MUSIC Tribe](#) factory using state-of-the-art automation, enhanced production workflows and quality assurance labs with the most sophisticated test equipment available in the world. As a result, we have one of the lowest product failure rates in the industry, and we confidently back it up with a generous [Warranty program](#).

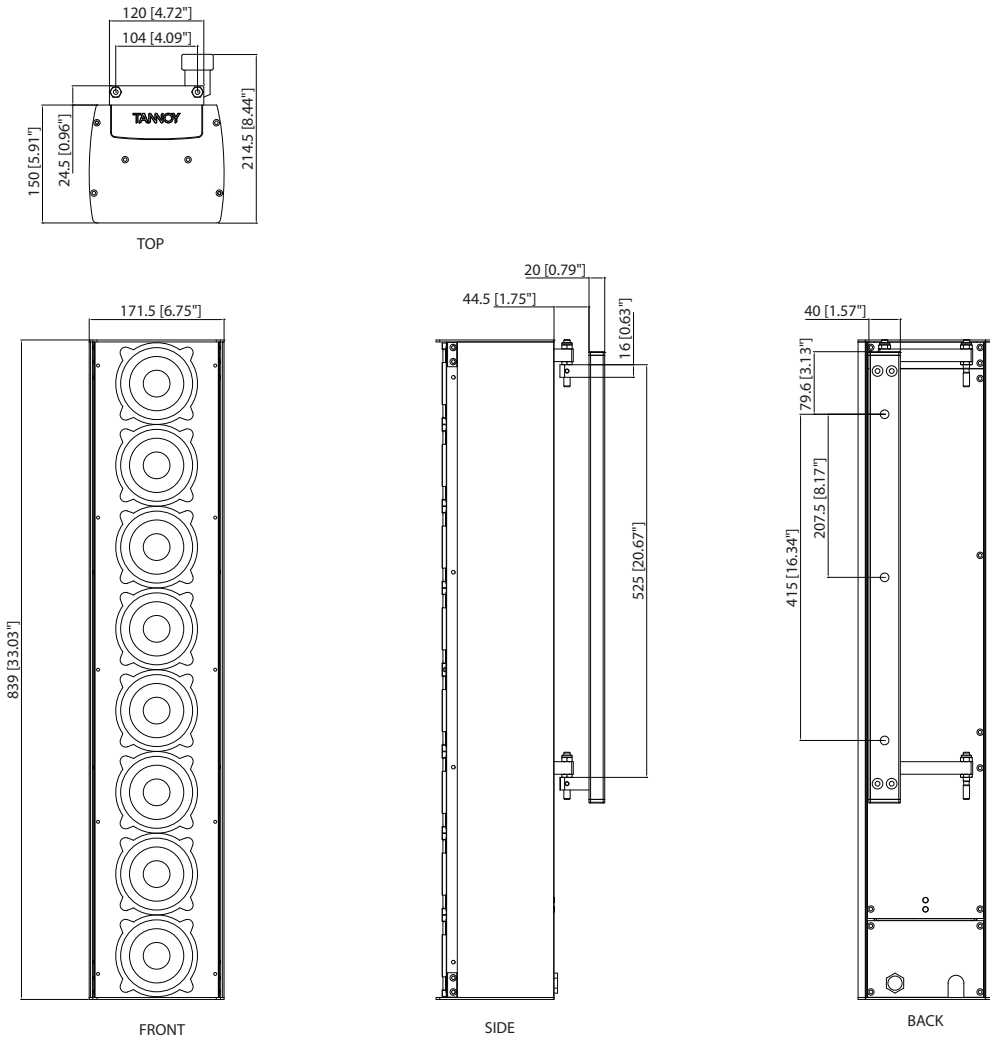


Install

QFLEX 8

Digitally Steerable Powered Column Array Loudspeaker with 8 Independently Controlled Drivers, Integrated DSP and BeamEngine GUI Control for Installation Applications

Dimensions



Install

QFLEX 8

Digitally Steerable Powered Column Array
Loudspeaker with 8 Independently Controlled
Drivers, Integrated DSP and BeamEngine GUI
Control for Installation Applications

Technical Specifications

Configuration

4" LF	8
No. of Amp Channels 100 W (RMS) @ 4 Ohms	8
Vertical Dispersion	Variable between 10 - 100 degrees (Asymmetric & multiple beams may also be generated)
Frequency Range	110 Hz - 4 kHz
Horizontal Dispersion	120 degrees
Aiming Angle Limit	± 70 degrees
LF Beam Control Limit	700 Hz
Maximum SPL @ 100 ft (30 m)*	92 dB
Column Height	840 mm (33")
Column Width	171.5 mm (6.7")
Column Depth	150 mm (5.9")
Typical Application Distance**	20 m (66 ft.)
Sample Rate	96 kHz
Audio Inputs	Analogue & AES/EBU
Net Weight	14.5 kg (31.9 lbs)
Accessories	VNET Ethernet Interface, Sentinel SM1 System Monitor
Mains supply	100-230 V~ 50/60 Hz
Max Input power/watts	220

* Average spl (1 khz – 8 khz). Based on a mounting height of 10 m (33 ft) and a target area @ 30m (98.5 Ft) and 10 m (33 ft) wide.

Maximum attainable spl is dependant on the dimension of the target area(s). Exact figures can be derived in the beamengine™ programme.

** Based on the above venue criteria achieving 95 db spl at the quoted distance.

Install

QFLEX 8

Digitally Steerable Powered Column Array
Loudspeaker with 8 Independently Controlled
Drivers, Integrated DSP and BeamEngine GUI
Control for Installation Applications



Install

QFLEX 8

Digitally Steerable Powered Column Array
Loudspeaker with 8 Independently Controlled
Drivers, Integrated DSP and BeamEngine GUI
Control for Installation Applications



Install

QFLEX 8

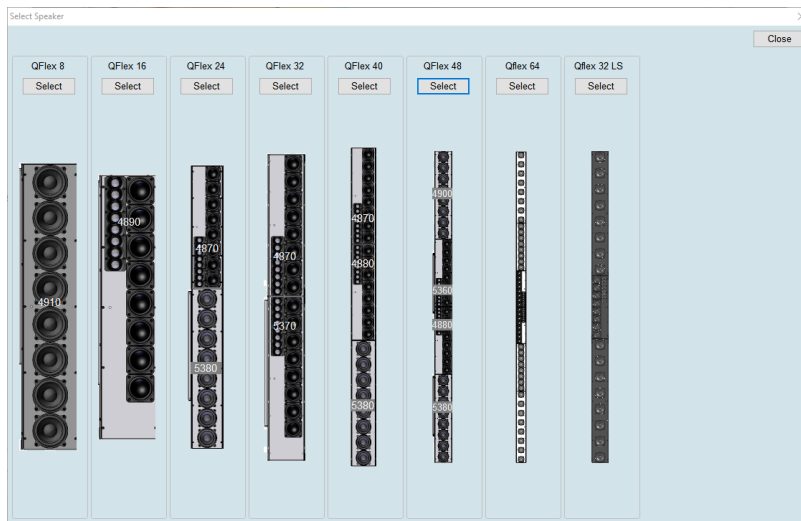
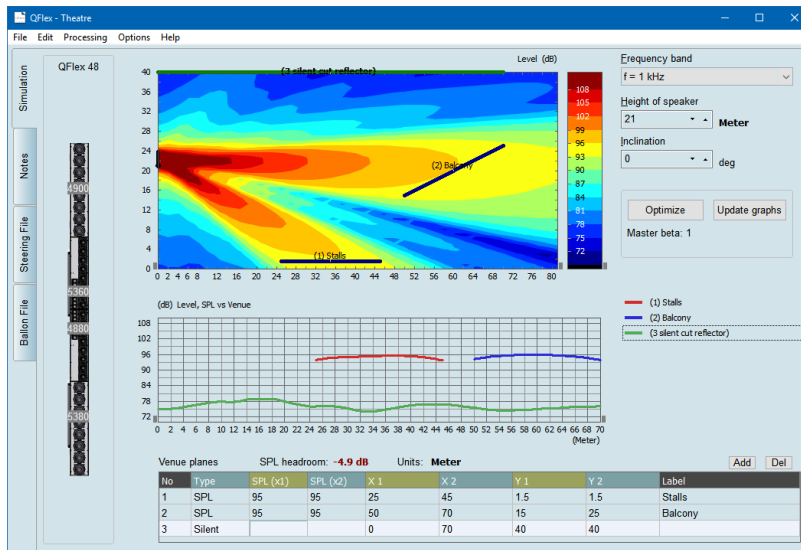
Digitally Steerable Powered Column Array
Loudspeaker with 8 Independently Controlled
Drivers, Integrated DSP and BeamEngine GUI
Control for Installation Applications



Install

QFLEX 8

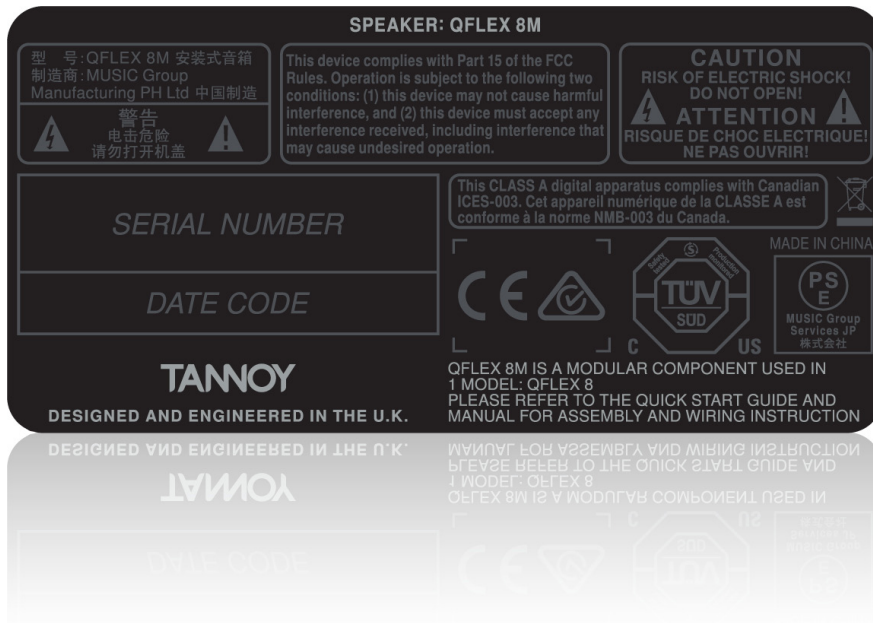
Digitally Steerable Powered Column Array Loudspeaker with 8 Independently Controlled Drivers, Integrated DSP and BeamEngine GUI Control for Installation Applications



Install

QFLEX 8

Digitally Steerable Powered Column Array
Loudspeaker with 8 Independently Controlled
Drivers, Integrated DSP and BeamEngine GUI
Control for Installation Applications



For service, support or more information contact the TANNOY location nearest you:

Europe
MUSIC Tribe Brands UK Ltd.
 Tel: +44156 273 2290
 Email: CARECrea@music-group.com
 CAREEnte@music-group.com
 CARELife@music-group.com

USA/Canada
MUSIC Tribe Commercial NV Inc.
 Tel: +1 702 800 8290
 Email: CARECrea@music-group.com
 CAREEnte@music-group.com
 CARELife@music-group.com

Japan
MUSIC Tribe Services JP K.K.
 Tel: +81 3 6231 0453
 Email: CARECrea@music-group.com
 CAREEnte@music-group.com
 CARELife@music-group.com

MUSIC Tribe accepts no liability for any loss which may be suffered by any person who relies either wholly or in part upon any description, photograph, or statement contained herein. Technical specifications, appearances and other information are subject to change without notice. All trademarks are the property of their respective owners. MIDAS, KLARK TEKNIK, LAB GRUPPEN, LAKE, TANNOY, TURBOSOUND, TC ELECTRONIC, TC HELICON, BEHRINGER, BUGERA and COOLAUDIO are trademarks or registered trademarks of MUSIC Tribe Global Brands Ltd. © MUSIC Tribe Global Brands Ltd. 2018 All rights reserved.

