

**ACS-1500 MK II**

ACTIVE COLUMN SPEAKER SYSTEM

**USER MANUAL**



SOFTWARE DOWNLOAD

## IMPORTANT SAFETY INSTRUCTIONS

1. Read these instructions.
  2. Keep these instructions.
  3. Heed all warnings.
  4. Follow all instructions.
  5. Do not use this apparatus near water.
  6. Clean only with dry cloth.
  7. Do not block any ventilation openings. Install in accordance with the manufacturer's instructions.
  8. Do not install near any heat sources such as radiators, heat registers, stoves, or other apparatus (including amplifiers) that produce heat.
  9. Do not defeat the safety purpose of the polarized or grounding-type plug. A polarized plug has two blades with one wider than the other.  
A grounding type plug has two blades and a third grounding prong.  
The wide blade or the third prong are provided for your safety. If the provided plug does not fit into your outlet, consult an electrician for replacement of the obsolete outlet.
  10. Protect the power cord from being walked on or pinched particularly at plugs, convenience receptacles, and the point where they exit from the apparatus.
  11. Only use attachments/accessories specified by the manufacturer.
  12. Use only with the tripod sold with the apparatus.
  13. Unplug this apparatus during lightning storms or when unused for long periods of time.
  14. Refer all servicing to qualified service personnel. Servicing is required when the apparatus has been damaged in any way, such as power-supply cord or plug is damaged, liquid has been spilled or objects have fallen into the apparatus, the apparatus has been exposed to rain or moisture, does not operate normally, or has been dropped.
-

# ACS-1500 MK II

INTRODUCTION	1
FEATURE	1
PACKING LIST	2
SOFTWARE DOWNLOAD	2
PANEL DESCRIPTION	3
PANEL DESCRIPTION SUBWOOFER / AMPLIFIER FUNCTION	4
CONNECTION	5-8
CONNECTION BLUETOOTH	5
CONNECTING THE COLUMN'S COMPONENTS	8
PRODUCT INSTALLATION	9
MANAGEMENT SYSTEM	11-17
SPECIFICATIONS	18
CAUTION	19
TRADEMARK AND LICENSES	20

---

INTRODUCTION

ACS-1500 MK II Series Professional Active Column Speaker System which can cover the usage area from small to large Designed for hi-end professional sound performance especially for frequency response up to 40Hz ~ 18KHz ± 3dB, Power maximum 1800 Watts Amplifier Class D with DSP processor 5 Preset for optimum performance. And can stream wireless music via Bluetooth Support ideal lifestound concert, event, shopping mall, meeting room - training, fitness, restaurant, hotel banquet room.

This series includes ACS-1500S-MK II (subwoofer), ACS-1500C-MK II(column speaker)

FEATURE

• Subwoofer Component	: 15", 3" voice coil
• Satellite Components	: 4" x 8 Full Range Speaker
• Dispersion Angle (H x V)	: 80 x 20 Degree.
• Frequency response	: 40Hz ~ 18KHz
• Max. SPL / (Peak)	: 125dB/134dB
• Power RMS	: 900W / 1800W (MAX)
• Built-in	: Class D Amplifier
• DSP Processor	: 5 Mode Preset DEFAULT , MUSIC , DANCE , SPEECH , USER
• Media player	: TWS Bluetooth 5.0 (True Wireless Stereo)
• Operating voltage	: AC 220V-240V : 50Hz / 60Hz

## PACKING LIST

Product box ACS-1500S-MK II (subwoofer),

- ACS-1500S-MK II x 1 pcs.
  - Dimensions (H x W x D) : 570 x 430 x 520mm
  - Net Weight : 27 Kgs.
- Power con x 1 pcs.
- Power cable x 1 pcs.
- User manual x 1 book.

Product box ACS-1500C-MK II (column speaker)

- ACS-1500C-MK II x 1 pcs.
  - Dimensions (H x W x D) : 980 x 135 x 135mm
  - Net Weight : 11 Kgs.
- Pole x 2 pcs. (9.5 cm Pole / 73cm Pole)
- Rigging : for columns.  
: for subwoofer.

## SOFTWARE DOWNLOAD

Software “ ACS-1500 MK II.zip ”

Link : [www.soundvisionpro.com/download](http://www.soundvisionpro.com/download)

### Software

^ ACS-1500 MK II

ACS-1500 MK II

download



## PANEL DESCRIPTION



1. RS 485 NETWORK DATA communication input : Use network data lines to connect RS485/USB converters to PC machines. Relevant operations can be performed through the software downloaded from PC. The ACTIVE light flashes when the data is connected
2. RS 485 NETWORK DATA communication output : Used to connect multiple devices simultaneously. The LINK lights on when the network is successfully connected to the next device.
3. MULTI-FUNCTION AUDIO SIGNAL INPUT: Used Combo XLR or 1/4" Jack connect mixer and other audio signal sources.
4. LINK OUT : Use XLR connector balanced or unbalanced.

## PANEL DESCRIPTION (SUBWOOFER/AMPLIFIER FUNCTION)

5. VOLUME MASTER : Control the volume for speaker system.
6. VOLUME SUBWOOFER : Control the volume for subwoofer speaker.
7. SIGNAL INDICATOR : The LED lights up when signal input.
8. LIMIT INDICATOR : illuminated just before the sub amplifier begins to clip and distort. Adjust the sub level control and signal level from your source so this illuminates only briefly on peaks in the music. Using the system with this on all or much of the time will result in poor sound quality and damage the speakers and electronics.
9. POWER INDICATOR
10. BLUETOOTH PAIRING BUTTON : Bluetooth can be found automatically and be connected automatically from second time. If no connection, Bluetooth will be off automatically after 2-seconds. Start to Bluetooth pairing if press this button, then press again to play after connected, and cancel pairing if press this button two or three seconds. LED indicator the status: listing said connected already, slow flash indicates the music is playing, quick flash is means matching.
11. DSP PRESETS : Use this button to toggle through the five different settings.
  - DEFAULT : This is the default setting for the speaker. Use this setting when the speaker is being used either on a tripod or pole and facing towards your audience.
  - MUSIC : Built-in dynamic treble and bass adjustment, and is suitable for the venues that requires a strong sense of rhythm music.
  - DANCE : Built-in dynamic mid and bass adjustment, and is suitable for the venues that requires a strong sense of rhythm dance.
  - SPEECH : Use this setting when the speaker is being used for speech only or spoken word applications and facing towards the audience.
  - USER : Users can adjustment sound DSP mode via the program.
12. SATELLITE SPEAKER OUTPUT : SPEAKON output connector to satellite.
13. POWER SWITCH : Turns the system On and Off. Ensure the system volume control at minimum when switching on.
14. POWER SUPPLY INPUT CONNECTOR : Use with power con.

## CONNECTION

### BLUETOOTH CONNECTION

1. Press and hold PAIR button for 2-3 seconds to start Bluetooth, the STATUS light flash quickly.
2. Search for “ACS-1500 MK II” on your device and connect. After the connection is successful, the STATUS light is always on. The STATUS light will flash slowly once the music starts playing.
3. In the Bluetooth connection mode, press PAIR button to interrupt the current Bluetooth connection, and you can connect to other Bluetooth devices.

Note: In the Bluetooth connection mode, press and hold the PAIR button for 2-3 seconds to turn off Bluetooth. Bluetooth will automatically turn off if no device is connected within 5 minutes.





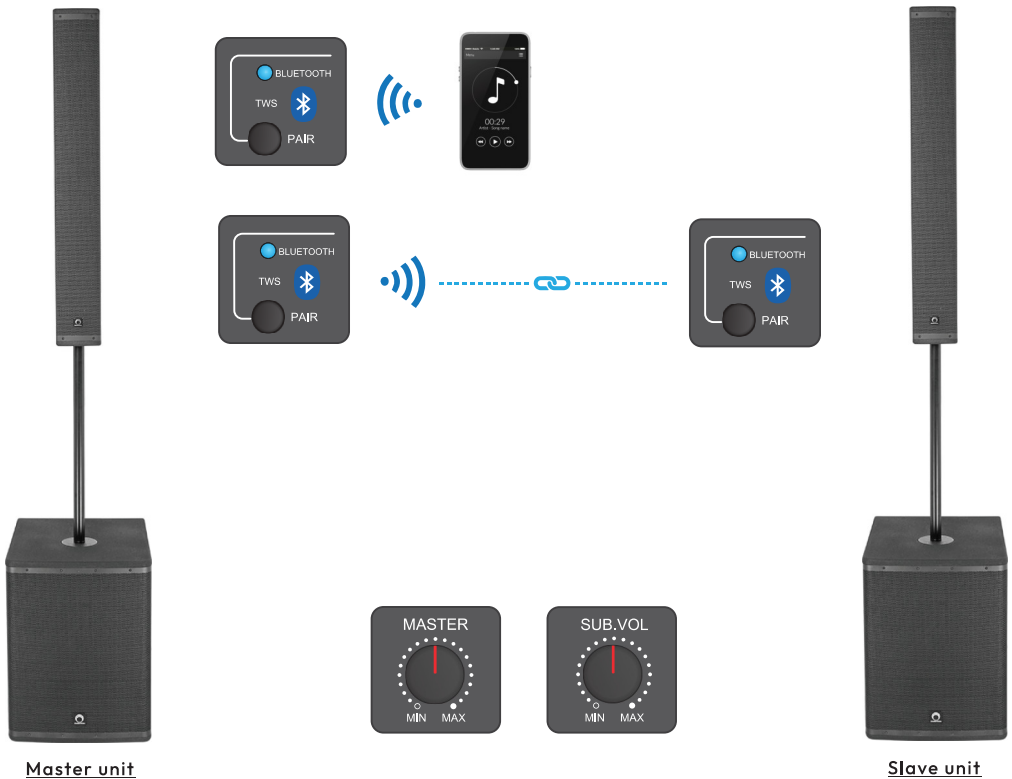
## CONNECTION

### STEREO BLUETOOTH CONNECTION

1. Put the two speakers close together, The Bluetooth of two speakers is all turned on.
2. Press the PAIR button twice on either speaker, the STATUS light changes to flash slowly. After the two speakers are successfully paired, the STATUS light will always on.
3. Search for "ACS-1500 MK II" on your device and connect.

Note: When pairing two speakers, try to place the two speakers close together.

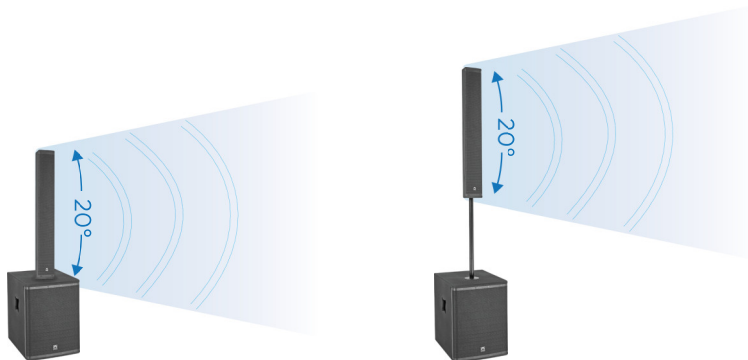
After the pairing is successful, they can be placed separately. The distance should preferably not exceed 5 meters. The speakers that have been paired successfully will be automatically paired from second time.



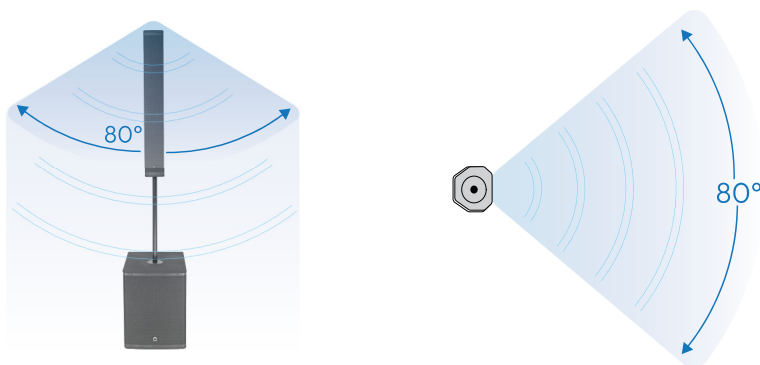
## CONNECTION

### VERTICAL AND HORIZONTAL DISPERSION ANGLES

Vertical Alignment column Vertical directivity is around 20°




Horizontal Alignment column horizontal directivity is around 80°



You'll get the best sound and coverage when all connected components project at the same angle.

## CONNECTING THE COLUMN'S COMPONENTS

Two speaker extension poles of different lengths

 9.5 CM Pole

  
73 CM Pole

The rigging lock between the speakers prevents moving

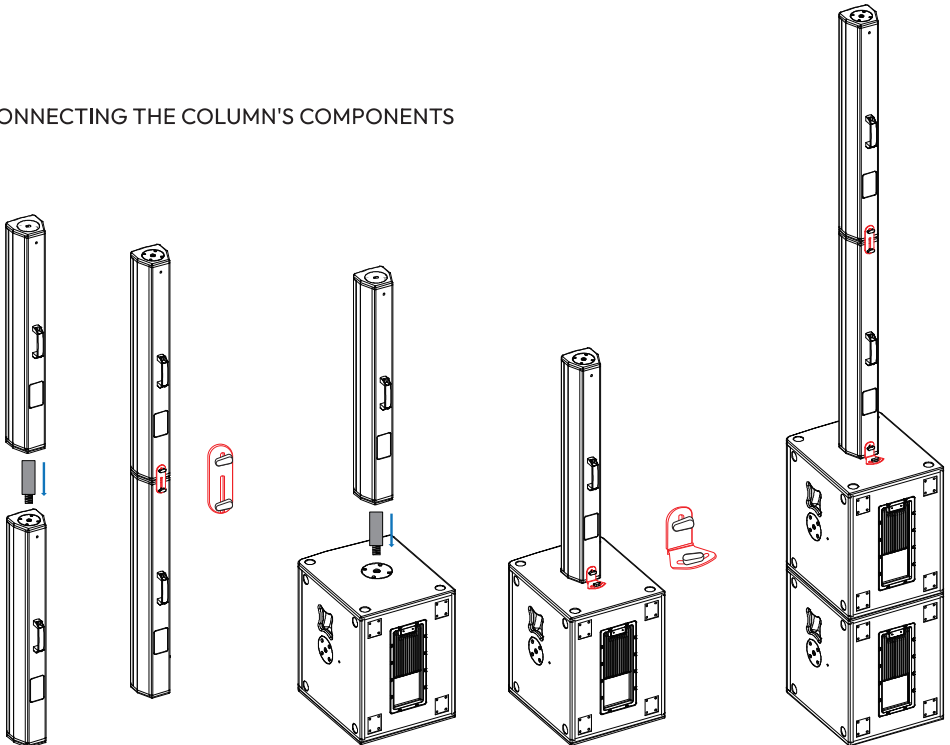


Rigging  
for columns

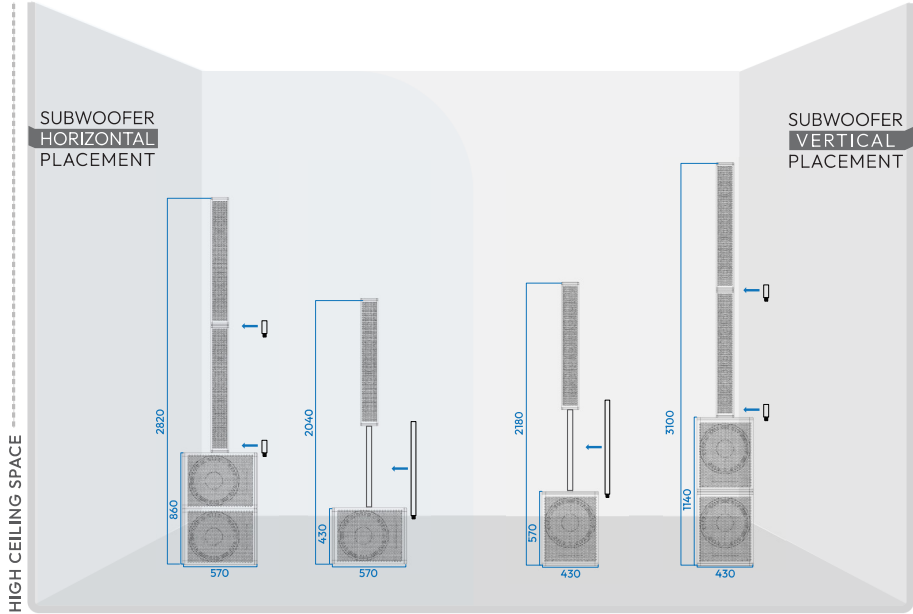
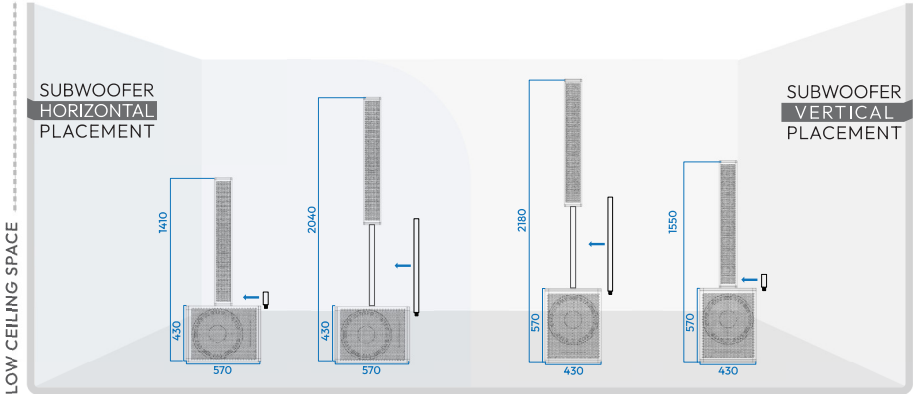


Rigging  
for subwoofer

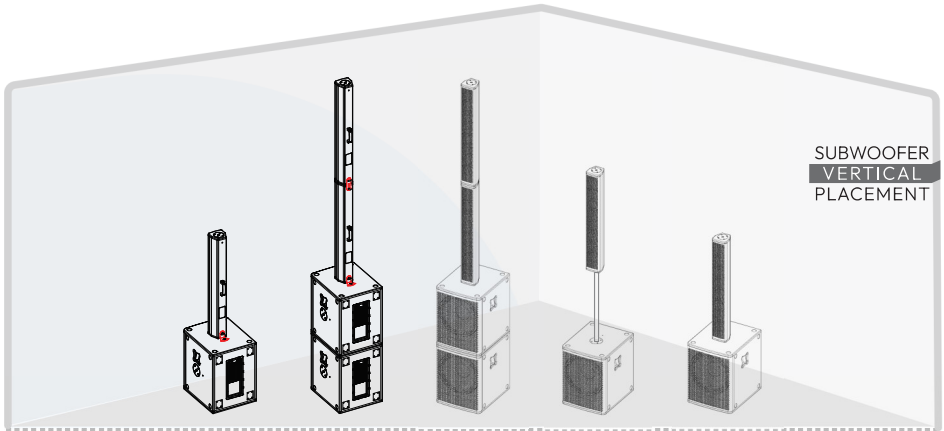
### CONNECTING THE COLUMN'S COMPONENTS



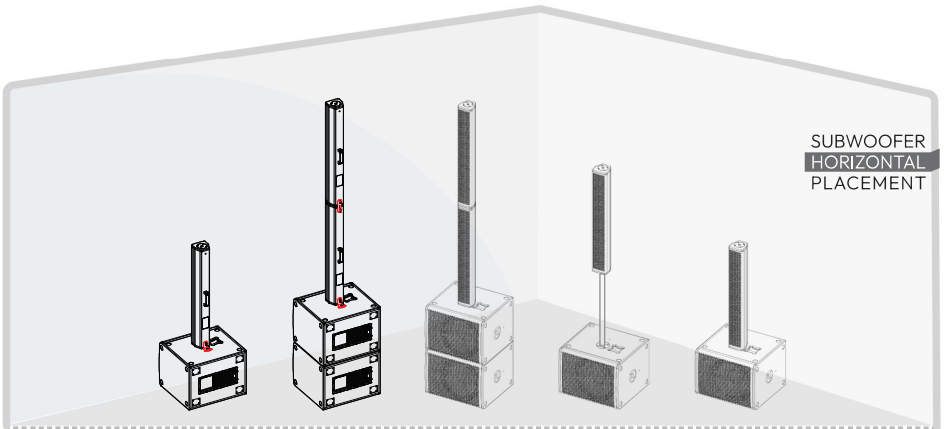
PRODUCT INSTALLATION



## PRODUCT INSTALLATION

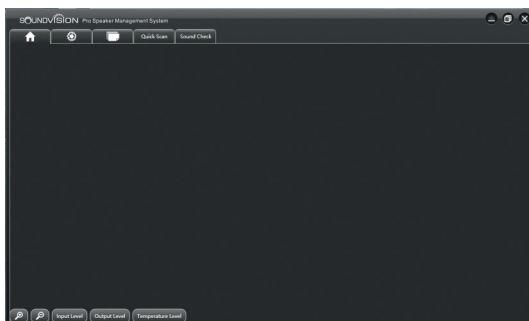


This series includes ACS-1500S -MK II (subwoofer), ACS-1500C-MK II (column speaker)



## PRO SPEAKER MANAGEMENT SYSTEM OPERATION

### HOME PAGE

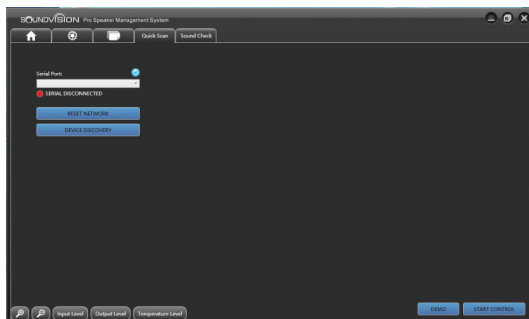


The Home screen is the first screen which appears after you launch the Pro Speaker Management System software. Access to main menu/System information/Load & Save/Quick Scan/Sound Check.

Also 5 quick access functions:

- Zoom + : To maximize blocks on main menu page.
- Zoom - : To minimize blocks on main menu page.
- Input Level : Press this button for a quick view of input level in all speaker blocks.
- Output Level : Press this button for a quick view of output level in all speaker blocks.
- Temperature level : Press this button for a quick view of amplifier temperature level in all speaker blocks.

### QUICK SCAN PAGE

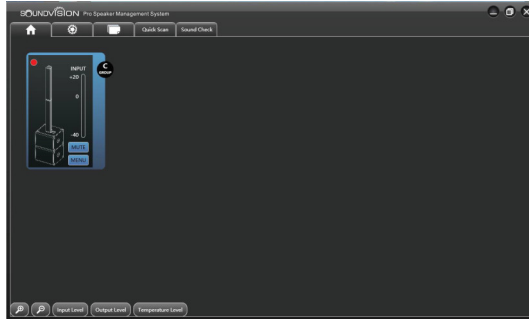


- Connect your speaker(s) to the RS485 computer interface.
- Check if the right PORT is selected for your RS485 interface.
- Press "RESET NETWORK".
- Press "DEVICE DISCOVERY" button, to find the speaker(s) connected to the RS485 network.
  - Once the discovery finished, the message "Stop Discovery" will appear.
  - The connected speakers will appear.
- Press "START CONTROL" to access speaker's features and controls.

NOTE: In this Quick Scan page, you have the DEMO function which allows you to have a look on general features and functions of the "Pro Speaker Management System" without connecting any speaker.

## PRO SPEAKER MANAGEMENT SYSTEM OPERATION

### HOME PAGE WITH SPEAKER BOX



Once your speaker detected on the RS485 network, you can START CONTROL.

The “speaker box” of your ACS-1500 MK-II is now accessible.

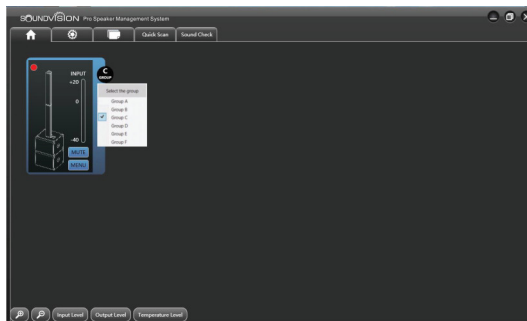
- The green light on top left of the box confirms your ACS-1500 MK-II system is well connected on network.
- 3 main functions are available:
  - (Group selection)
  - (MUTE)
  - (MENU)

### GROUP SELECTION:

Very convenient if you want to adjust several speakers at same time.

Example: If you have 2 x ACS-1500 MK-II systems. one on right side and one on left side, you can adjust crossover parameters, EQ parameters, levels ... on both speakers at same time.

Just select the same group for the 2 systems.



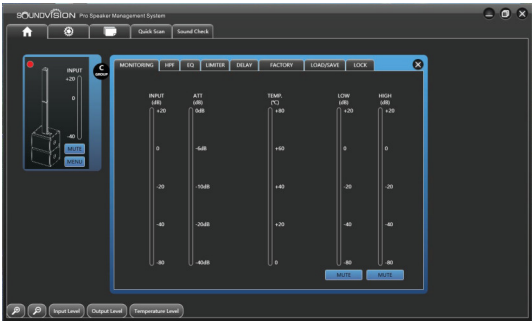
NOTE: Up to 6 groups of speakers can be created.

PRO SPEAKER MANAGEMENT SYSTEM OPERATION

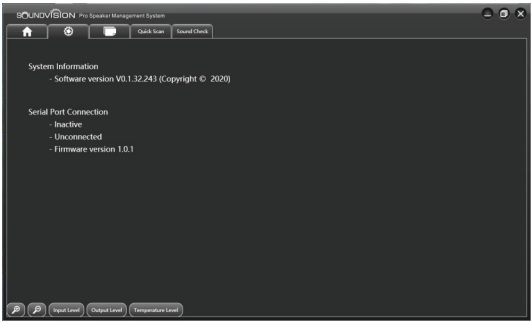
MUTE: Press this button to mute the complete system.

NOTE: You can press any “quick access button” (Input LEVEL, Output LEVEL or Temperature LEVEL) at any time. The speaker box will display the LEVEL selected.

MENU: Press this button to access speaker parameters.



SYSTEM INFORMATION PAGE

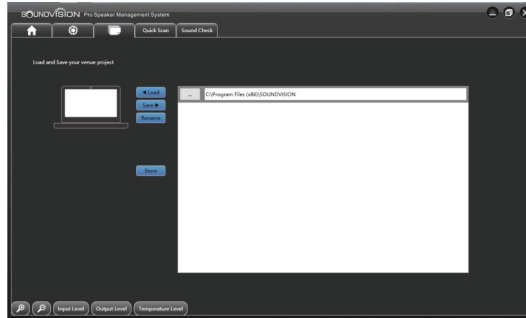


Displays your connection status and the software version.



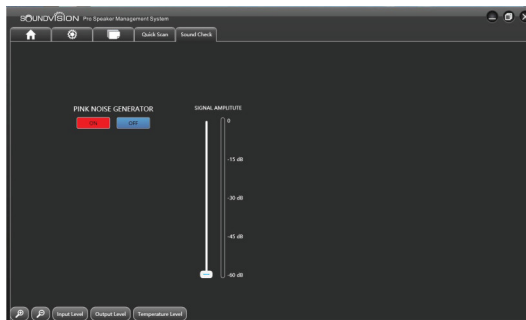
## PRO SPEAKER MANAGEMENT SYSTEM OPERATION

### LOAD & SAVE PAGE



- Save your project, Load a project, Rename a project  
Project files will be saved in your computer system file, in folder "AudioRS485" automatically created when you have installed the Pro Speaker Management System in your computer.

### SOUND CHECK PAGE

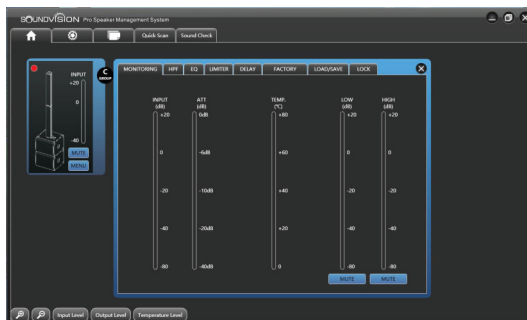


Very useful tool for your sound checking. Turn "ON" PINK NOISE GENERATOR and adjust your speaker SPL curve with external spectrum analyzer.

## PRO SPEAKER MANAGEMENT SYSTEM OPERATION

### SPEAKER BOX (MENU)

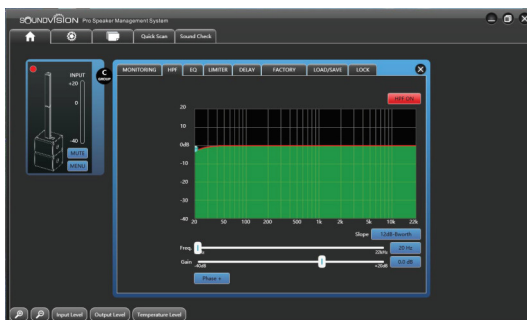
### MONITORING PAGE



Monitor your system in real-time.

From this page you can separately MUTE the top speaker and the Sub bottom speaker.

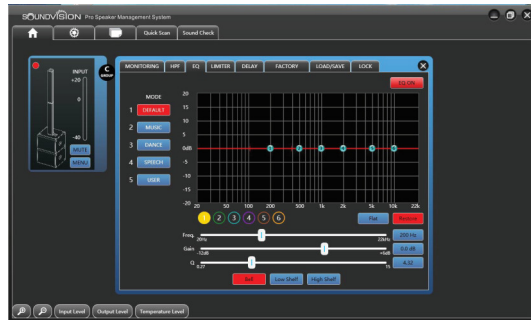
### HPF FILTER PAGE



Adjust here the low-cut frequency to protect your system or to adjust low cut frequency if you use an extra SUBWOOFER.

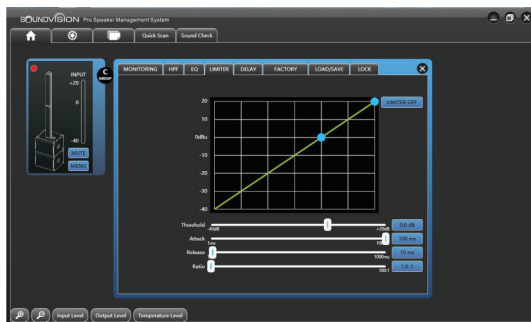
## PRO SPEAKER MANAGEMENT SYSTEM OPERATION

### EQ PAGE



This EQ page is for general EQ of your system. This is a parametric EQ with 6 EQ points. You can adjust Frequency, Gain and Slope for each separate EQ point. You can select “Bell”, “Low Shelf” or “High Shelf” curve. Also available on this page the “MODE” button, to select one of the 5 EQ presets.

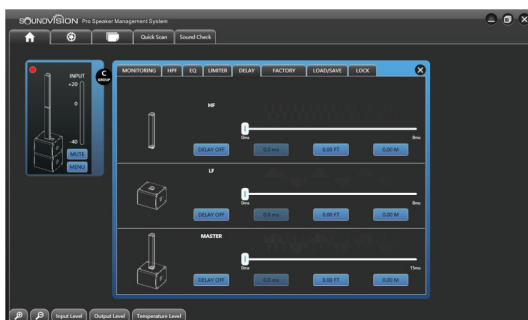
### LIMITER PAGE



Protect your system. As a professional limiter section, you can adjust: Threshold, Attack, Release and Ration adjustments.

## PRO SPEAKER MANAGEMENT SYSTEM OPERATION

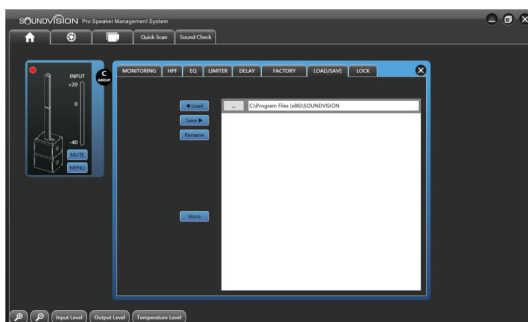
### DELAY PAGE



You may need to add delay on your speaker system depending on its position in your installation. You don't need external speaker management system. You can do it directly with the ACS-1500 MK-II software.

To help you on delay adjustment , the delay is displayed in M(meter), ms( Millisecond time) and FT(feet)

### LOAD & SAVE PAGE



-Save your project, Load a project, Rename a project

Project files will be saved in your computer system file, in folder "AudioRS485" automatically created when you have installed the Pro Speaker Management System in your computer.

## SPECIFICATIONS

<b>Model</b>	ACS-1500S-MK II (subwoofer)	ACS-1500C-MK II (column)
<b>Transducer</b>	Subwoofer Components :	Satellite Components :
	15", 3" voice coil	4" X 8 Full Range Speaker
<b>Frequency Response</b>	40Hz ~ 180Hz ±3dB	180Hz ~ 18kHz ±3dB
<b>Rated Power</b>	600W / 1200W (MAX)	300W / 600W (MAX)
<b>Amplifier</b>	Class D	
<b>Sensitivity</b>	95dB 1m/1W	96dB 1m/1W
<b>Maximum SPL</b>	125dB/134dB (PEAK)	125dB/134dB (PEAK)
<b>Nominal Impedance</b>	4 Ω	4 Ω
<b>Built-in DSP Processor</b>	5 Mode Presets (DEFAULT, MUSIC, DANCE, SPEECH, USER)	
<b>Media player</b>	TWS Bluetooth 5.0 (True Wireless Stereo)	
<b>Dispersion Angle (H x V)</b>		80° X 20°
<b>Connection</b>		
<b>Line Input</b>	1 x Combo XLR or 1/4" Jack (female)	
<b>Line Output</b>	1 x XLR (male)	
<b>Net Port</b>	2 x RS485 (RJ45)	
<b>Speaker Port</b>	1 x SPEAKON (OUT)	1 x SPEAKON (IN)
<b>General</b>		
<b>Operating voltage</b>	AC 220 ~ 240V, 50/60Hz	
<b>Dimensions (H x W x D)</b>	570 x 430 x 520mm	980 x 135 x 135mm
<b>Net Weight</b>	27 Kgs.	11 Kgs.

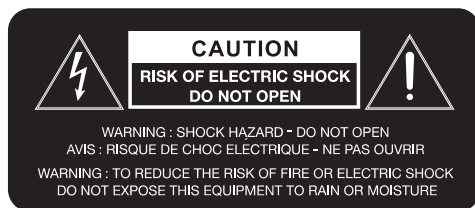
NOTE: SOUNDVISION products are subject to a process of continuous development. Specifications are subject to change without notice.

\* Bluetooth range is affected by walls, obstructions, and movement. For optimal performance, place the product in the center of the room so it is unobstructed by walls, furniture, etc.

\* Battery life may vary based on temperature, age, and volume usage of product.

## CAUTION!

To reduce the risk of electric shock, do not remove cover (or back). There are no user serviceable parts inside. Maintenance and repairs should be exclusively carried out by qualified service personnel.



The warning triangle with lightning symbol indicates dangerous uninsulated voltage inside the unit, which may cause an electrical shock.



The warning triangle with exclamation mark indicates important operating and maintenance instructions.

## SYSTEM SETUP

1. Whenever possible, place the subwoofer in a corner of the room or along the wall.  
Place the satellites as necessary for the desired coverage and stereo image.
2. Confirm the voltage selector is in the correct position, then plug the AC cord into the nearest grounded (3 wire) outlet.
3. Connect the satellite speakers speakon output connectors located on the back of the subwoofer.  
Use speakon cables specifically designed for speakers.
4. Attach and/or connect a signal source.

## TRADEMARK AND LICENSES



**SOUNDVISION™** is a trademark of **Sound Vision CO., LTD.** registered in the Thailand, China, Laos and other countries. Names are trademarks or registered trademarks of their respective owners.

## SOUND VISION CO.,LTD

9 CHAIYAPHRUEK RD., Taling Chan, Taling Chan,  
BANGKOK 10170 THAILAND  
SUPPORT : 02-433-9988      LINE : @SOUNDVISION  
EMAIL : INFO@SOUNDVISION.CO.TH      WWW.SOUNDVISIONPRO.COM



