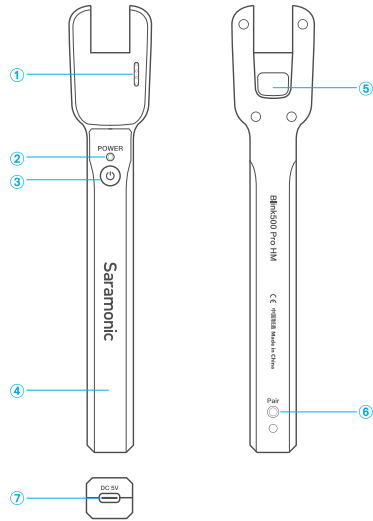


## Product Structure

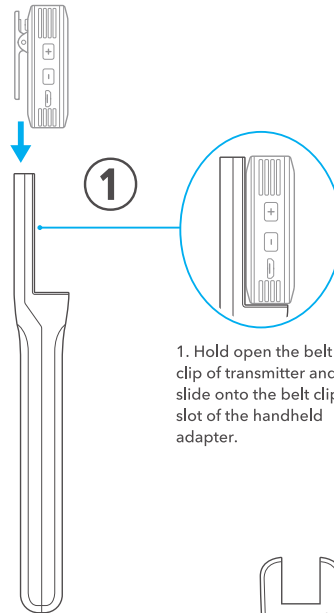


- ① Charging Contacts
- ② Power Indicator  
Solid Red Light = Blink500 Pro HM is being charged  
Solid Blue Light = Blink500 Pro HM is charging the TX
- ③ Power Button
- ④ Handheld Holder
- ⑤ Belt-clip Slot
- ⑥ Pair Button
- ⑦ USB-C Charging Port

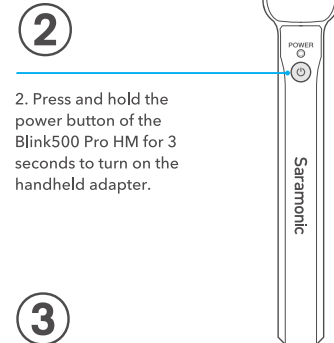
## Specifications

Power Capacity	Built-in Li-ion Battery 3.7V/1100mAh
Charging Port	USB-C
Dimensions	206.7x38.1x25.2mm (8.1x1.5x1" )
Weight	Approx. 68.5g (2.4 oz.)
Operating Temperature	0°C to 50°C
Storage Temperature	-20°C to +55°C

## Quick Setup Guide



1. Hold open the belt clip of transmitter and slide onto the belt clip slot of the handheld adapter.



2. Press and hold the power button of the Blink500 Pro HM for 3 seconds to turn on the handheld adapter.



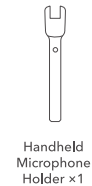
3. The transmitter will be charged automatically when it is attached in place.  
**Note:** the Blink500 Pro TX transmitter is not included.

## How to Pair?

-It is unnecessary to pair the Blink 500 Pro in the HM if the TX and RX are already paired.

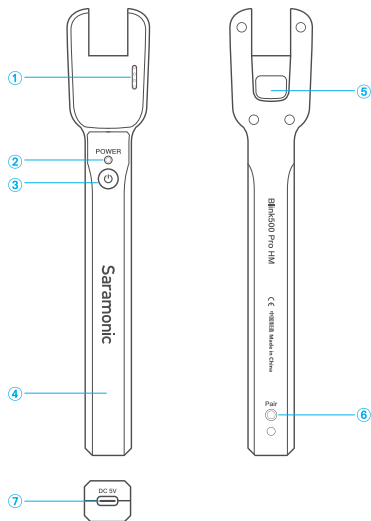
1. Hold open the belt clip of the transmitter and slide onto the belt clip slot of the handheld adapter.
2. Hold down the power button of the Blink500 Pro HM for 3 seconds to turn on the handheld adapter.
3. Hold down the power buttons of the Blink500 Pro TX and RX to turn on the transmitter and receiver. Then put the receiver back in the charging case.
4. While the TX & RX are both on and with the receiver in the charging case and the transmitter is inserted into the handheld adapter, simultaneously press both the pairing button on the charging case and the pairing button on the handheld adapter.
5. The system is successfully paired when the pairing indicators of the RX's and the TX's OLED displays both display "P".
6. You are ready to record.

## Packing Lists



Scan the QR code and follow us  
扫描微信关注枫笛公众号

## 产品结构

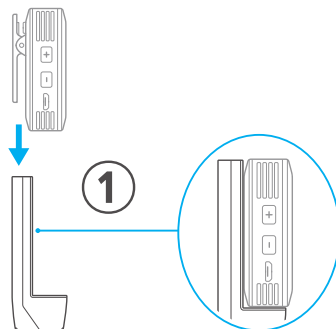


- ① 充电触点
- ② 电源指示灯  
电源给支架充电时，充电过程中 power 灯常亮红灯；  
支架给 TX 产品充电时，充电过程中 power 指示灯常亮蓝灯。
- ③ 电源开关
- ④ 手柄
- ⑤ 背夹凹槽
- ⑥ 配对键
- ⑦ Type-C 充电口

## 参数

电池规格	内置锂电池 3.7V/1100mAh
充电接口	Type-C
尺寸	206.7x38.1x25.2mm
重量	68.5g
工作温度	0°C至 50°C
贮存温度	-20°C至 +55°C

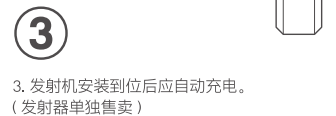
## 安装步骤



1. 按压发射器背部的背夹，将发射器固定在手持支架上。



2. 长按电源键 3 秒，开启支架电源。



3. 发射机安装到位后应自动充电。  
(发射器单独售卖)

## 对码使用

“如果发射器和接收器已经在充电盒中配对成功，无需在 Blink500 Pro HM 上进行二次配对操作。”

1. 按压发射器背部的背夹，将发射器固定在手持支架上。
2. 长按电源键 3 秒，开启支架电源。
3. 开启发射器和接收器电源。
4. 当设备都开启之后，并将组件放入充电盒和支架上，按下充电盒和支架上各自的配对按钮。
5. 对码成功后，接收器屏幕上状态会显示为已对码，并显示发射器的电量 "99%"。
6. 开始录音。

## 配件清单



Blink500 Pro  
HM 手持支架  
x1



防风海绵  
x1



Type-C  
充电线  
x1



For better recording experience, the application **SmartRecorder** is recommended.  
为获得更好的录制体验，推荐使用枫笛 Saramonic 自主研发应用程序 **SmartRecorder**。

Shenzhen Jiayz Photo Industrial, Ltd  
深圳市长丰影像器材有限公司

A16 Building, Intelligent Terminal Industrial Park of Silicon Valley  
Power, Guanlan, Longhua District, Shenzhen, China  
深圳市龙华区观澜街道大富工业区硅谷动力智能终端产业园A16栋