

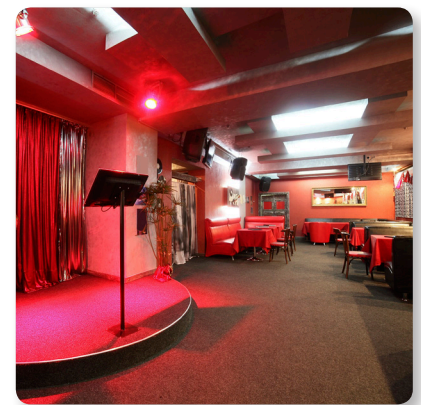
Install

TKT102

2 Way 10" Full Range Loudspeaker for KTV Applications

- 2 way full range loudspeaker for KTV applications
- Rotatable waveguide with 100° H x 60° V dispersion
- 300 Watts continuous, 1,200 Watts peak power
- High power 10" low frequency driver with low mass voice coil
- Titanium dome 1" ferrite motor compression driver
- Precision engineered crossover for maximum performance in the midrange vocal region
- Tweeter overload protection circuit gives uninterrupted performance
- Multiple internal rigging points allow standard bracket mount and suspension in any orientation
- Trapezoidal cabinet shape enables visually unobtrusive installation
- 15 mm (5/8") birch plywood enclosure with hard wearing semi matt black paint finish
- Architecturally styled powder coated perforated steel mesh grille with foam backing
- Integral 35 mm pole mount and handle for portable operation
- Neutrik speakON® NL4 and barrier strip connectors
- 10-Year Warranty Program*
- Designed and engineered in the U.K

The 2 way full range TKT102 is a 1,200 Watt 10" loudspeaker system designed specifically for KTV applications. Engineered for either permanent installation or portable operation, TKT102's trapezoidal cabinet shape accommodates industry standard mounting brackets, while the 35 mm pole mount and integral carry handle provide additional versatility.



Precision and Detailed Clarity

The TKT102 loudspeaker features a 10" low frequency driver with a low mass voice coil for improved transient response, and a Titanium dome 1" ferrite motor compression driver mounted on a 100° horizontal by 60° vertical low distortion waveguide. All drivers are matched with a high-precision passive crossover network that provides maximum performance in the midrange vocal region. The rear panel connector plate carries Neutrik speakON® NL4 and screw terminal barrier strip connectors for quick and convenient wiring.

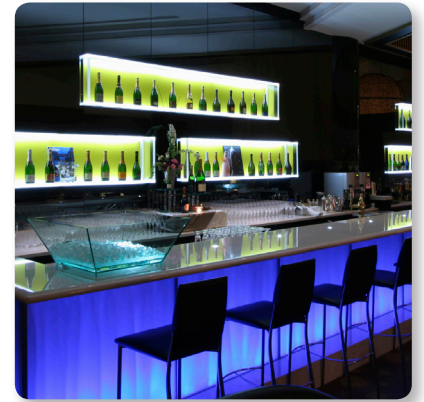
*All third-party trademarks are the property of their respective owners. Their use neither constitutes a claim of the trademark nor affiliation of the trademark owners with Music Tribe. Product names are mentioned solely as a reference for compatibility, effects and/or components. Warranty details can be found at musictribe.com.

TKT102

2 Way 10" Full Range Loudspeaker for
KTV Applications

Rock Solid Construction

Finished in a highly durable semi matt black paint, the cabinet is constructed from 15 mm (5/8") birch plywood – and includes an architecturally styled powder coated perforated steel mesh grille backed with reticulated foam. Multiple internal rigging points are provided for suspension in any orientation, or mounting with industry standard brackets – available separately.



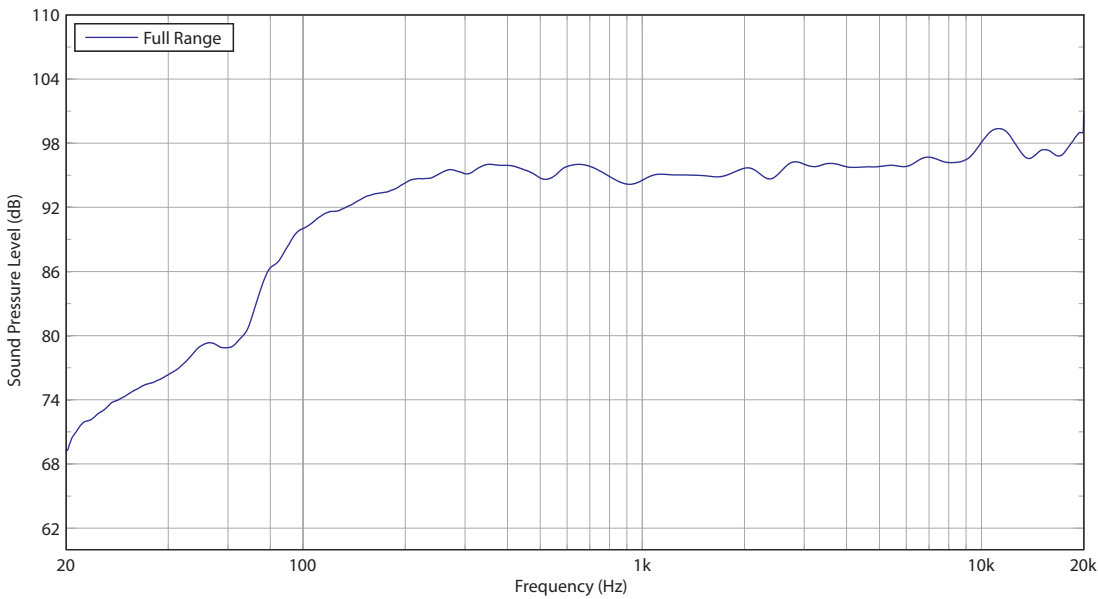
You Are Covered

We always strive to provide the best possible Customer Experience. Our products are made in our own [Music Tribe](#) factory using state-of-the-art automation, enhanced production workflows and quality assurance labs with the most sophisticated test equipment available in the world. As a result, we have one of the lowest product failure rates in the industry, and we confidently back it up with a generous [Warranty program](#).

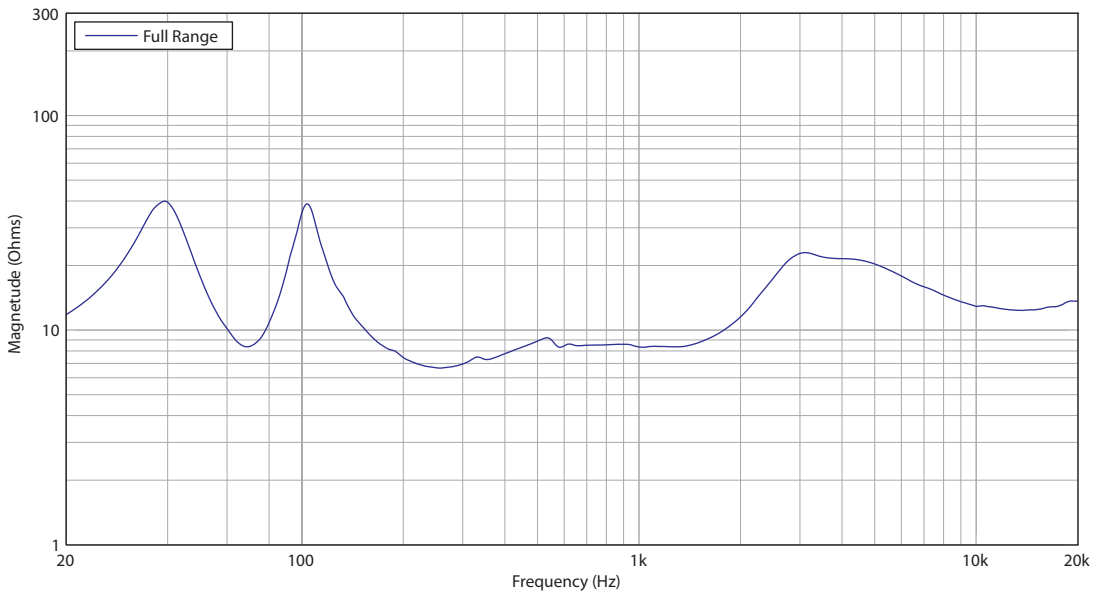
TKT102

2 Way 10" Full Range Loudspeaker for
KTV Applications

Frequency Response Sensitivity 1 W / 1 m



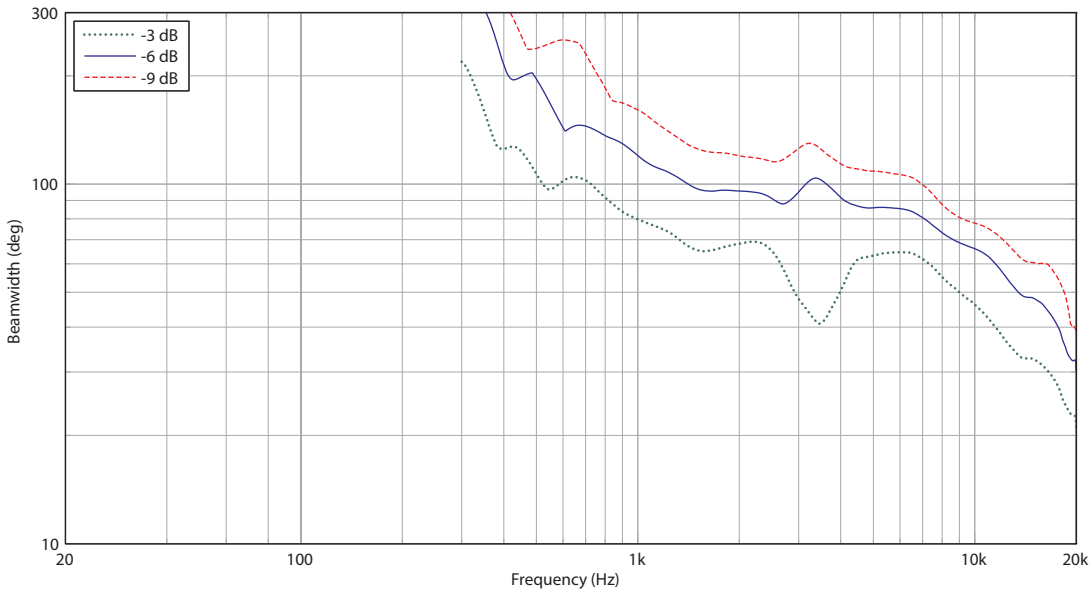
Impedance



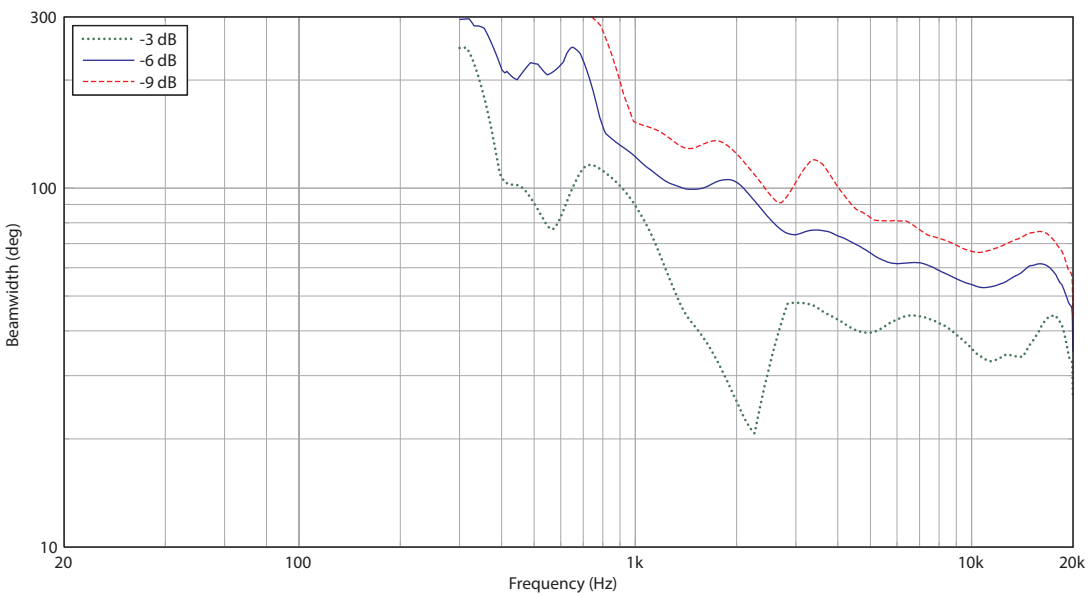
TKT102

2 Way 10" Full Range Loudspeaker for
KTV Applications

Horizontal Beamwidth



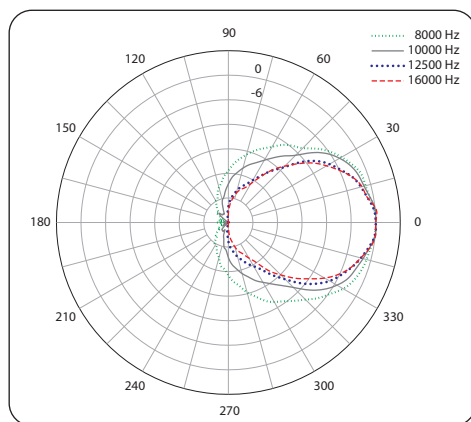
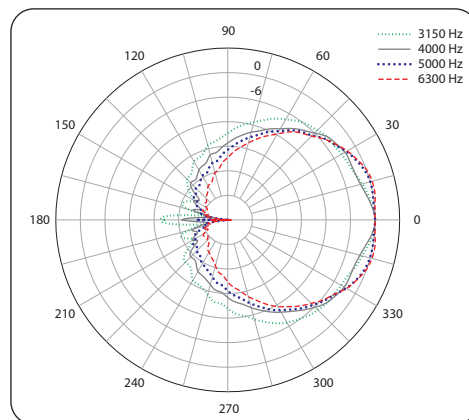
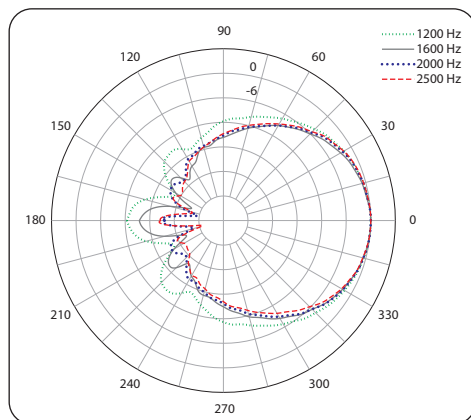
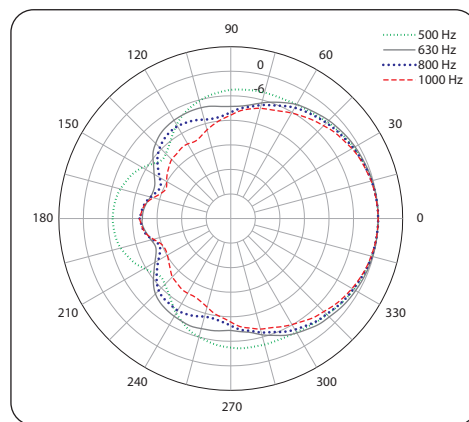
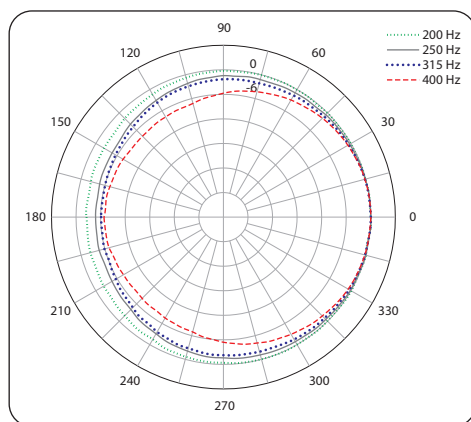
Vertical Beamwidth



TKT102

2 Way 10" Full Range Loudspeaker for
KTV Applications

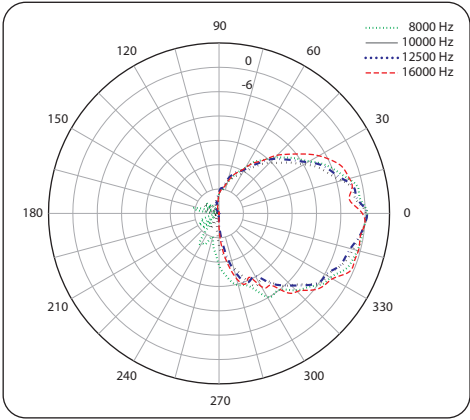
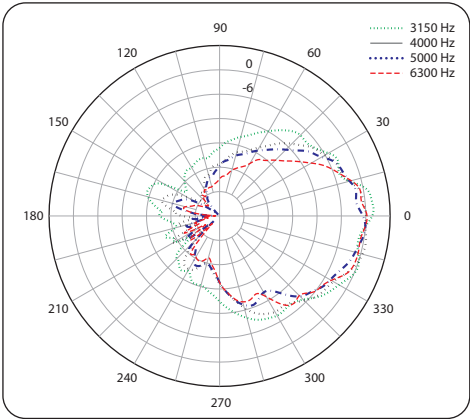
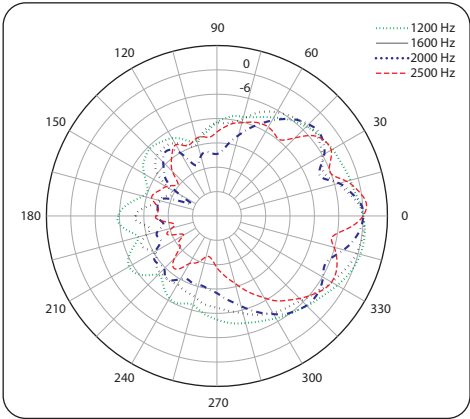
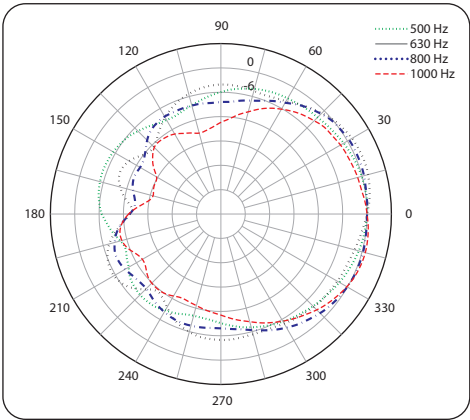
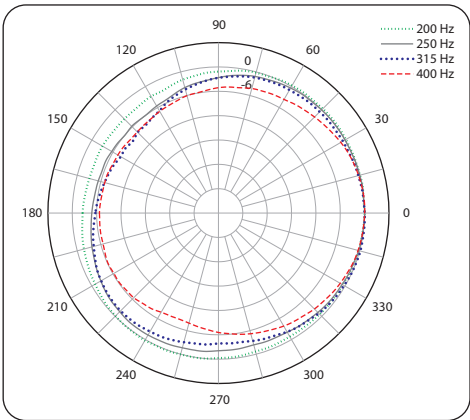
Horizontal Polar Plots



TKT102

2 Way 10" Full Range Loudspeaker for
KTV Applications

Vertical Polar Plots

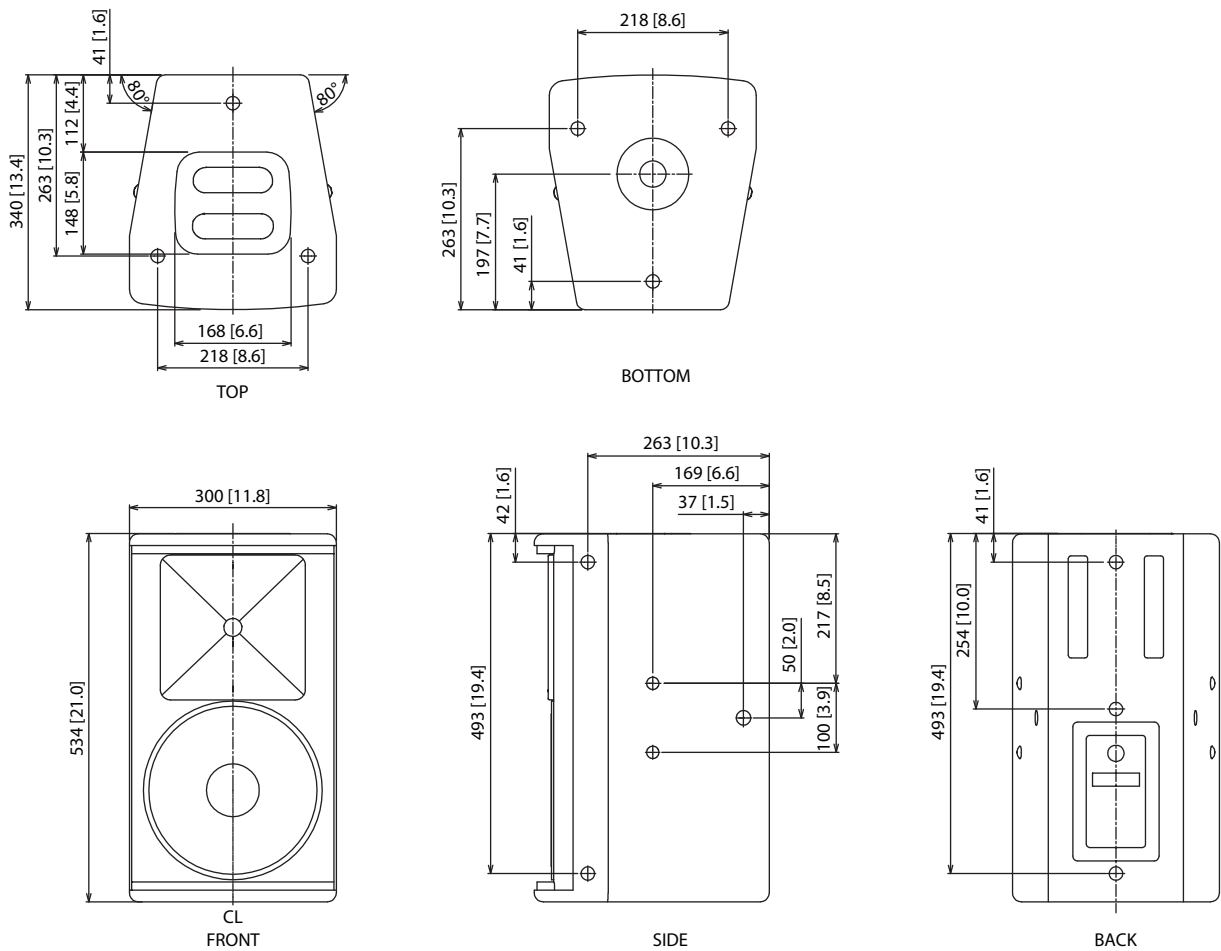


Install

TKT102

2 Way 10" Full Range Loudspeaker for
KTV Applications

Dimensions



Install

TKT102

2 Way 10" Full Range Loudspeaker for
KTV Applications

Mounting and Rigging

The cabinet is fitted with M10 x 19 internally-threaded rigging points, and it is compatible with industry standard wall and ceiling brackets.

The cabinet has a standard pole mount receptacle that allows it to be used with an industry standard 35 mm speaker pole

Install

TKT102

2 Way 10" Full Range Loudspeaker for
KTV Applications

Technical Specifications

System	
Frequency response	85 Hz – 20 kHz ±3 dB 63 Hz – 20 kHz -10 dB
Nominal dispersion	100° H x 60° V @ -6 dB points
Power handling (IEC)	300 W continuous, 1,200 W peak
Sensitivity	95 dB (1 W @ 1 m)
Maximum SPL	120 dB continuous, 126 dB peak
Impedance	8 Ω
Components	1 x 10" (259 mm) LF driver 1 x 1" (25 mm) HF compression driver

System	
Connectors	1 x Neutrik speakON* NL4, 1 x barrier strip terminals
Wiring	Pins 1+ / 1- input, pins 2+ / 2- link
Dimensions (H x W x D)	534 x 302 x 340 mm (21 x 11.9 x 13.4")
Net weight	16.6 kg (36.5 lbs)
Construction	15 mm (¾") birch plywood
Finish	Semi matt black paint
Grille	Powder coated perforated steel
Flying hardware	M10 x 19

TKT102

2 Way 10" Full Range Loudspeaker for
KTV Applications

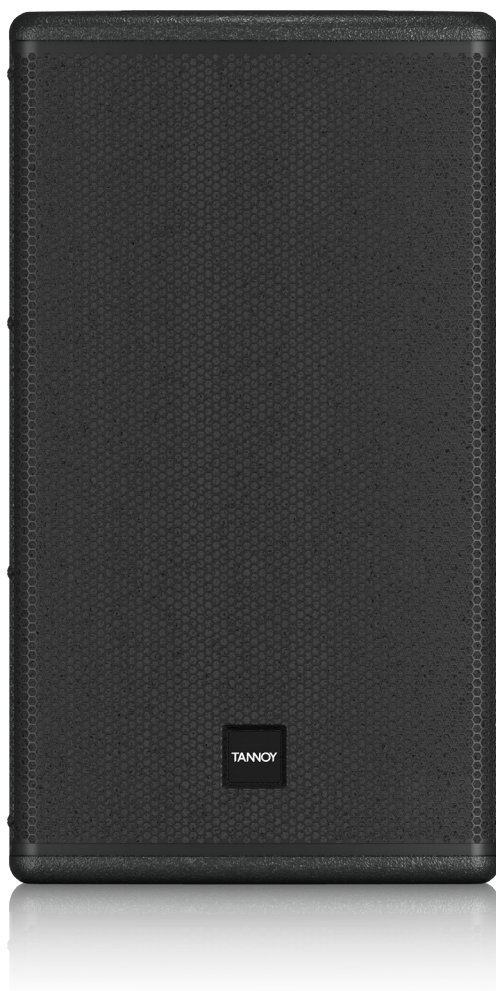
Architecture & Engineering Specifications

The loudspeaker shall be of the full range, two-way passive type consisting of one 10" (259 mm) LF driver and one 1" (25 mm) HF compression driver. Performance specifications of a typical production unit shall meet or exceed the following: frequency response, measured with swept sine wave input, shall be flat within ± 3 dB from 85 Hz to 20 kHz and within -10 dB from 63 Hz to 20 kHz. Nominal dispersion, at -6 dB points, shall average 100° H x 60° V. Nominal impedance shall be 8 Ohms. Power handling shall be 300 Watts continuous, 1,200 Watts peak. Sensitivity, measured on axis, mean averaged over stated bandwidth, shall be 95 dB, 1 Watt @ 1 metre. Maximum SPL (peak), measured at 1 metre with music program at stated amplifier input, shall be 126 dB. Dimensions: 534 mm high x 302 mm wide x 340 mm deep (21.0" x 11.9" x 13.4"). Net weight: 16.6 kg (36.5 lbs). The loudspeaker system shall be the [Tannoy](#) TKT102. No other loudspeaker shall be acceptable unless submitted data from an independent test laboratory verifies that the above combined performance / size specifications are equalled or exceeded.

Install

TKT102

2 Way 10" Full Range Loudspeaker for
KTV Applications



Install

TKT102

2 Way 10" Full Range Loudspeaker for
KTV Applications



Install

TKT102

2 Way 10" Full Range Loudspeaker for
KTV Applications



Install

TKT102

2 Way 10" Full Range Loudspeaker for
KTV Applications



For service, support or more information contact the Tannoy location nearest you:

Europe
Music Tribe Brands UK Ltd.
Email: CARECrea@musictribe.com
CAREEnte@musictribe.com
CARELife@musictribe.com

USA/Canada
Music Tribe Commercial NV Inc.
Email: CARECrea@musictribe.com
CAREEnte@musictribe.com
CARELife@musictribe.com

Japan
Music Tribe Services JP K.K.
Email: CARECrea@musictribe.com
CAREEnte@musictribe.com
CARELife@musictribe.com

Music Tribe accepts no liability for any loss which may be suffered by any person who relies either wholly or in part upon any description, photograph, or statement contained herein. Technical specifications, appearances and other information are subject to change without notice. All trademarks are the property of their respective owners. Midas, Klark Teknik, Lab Gruppen, Lake, Tannoy, Turbosound, TC Electronic, TC Helicon, Behringer, Bueger, Auratone and Coolaudio are trademarks or registered trademarks of Music Tribe Global Brands Ltd. © Music Tribe Global Brands Ltd. 2019 All rights reserved.

TANNOY