



**PRO AUDIO
IN MOTION**

go play outside

MAUI® 5 GO

ULTRA-PORTABLE BATTERY-POWERED
COLUMN PA SYSTEM



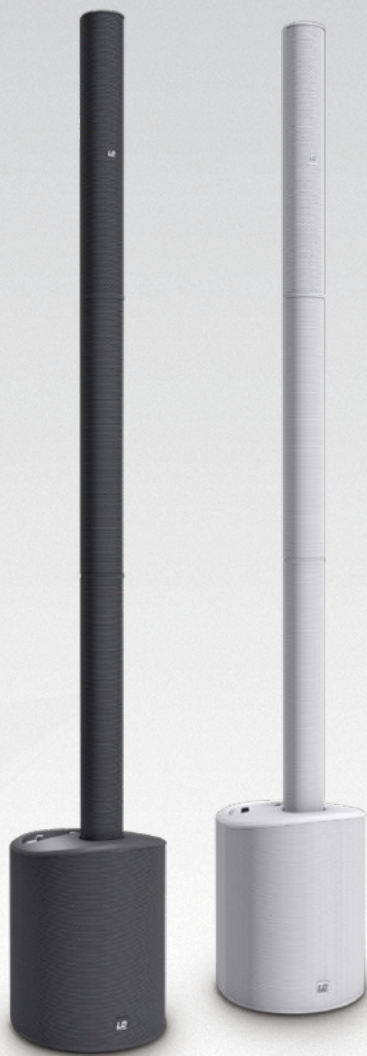
LI-ION BATTERY
FOR UP TO
20 HOURS OF MUSIC



A close-up photograph of a guitar body and a microphone. The guitar body is a warm, reddish-brown color with a glossy finish. A black strap is visible across the top. To the right, a black, textured microphone is positioned vertically. The background is a soft-focus green, suggesting an outdoor setting. The text "go play outside" is overlaid in white on the left side of the guitar body.

go
play
outside








Combining **outstanding sound quality** and stunning **compact design** with the amazing versatility of **battery-operated** speakers, we've created an **ultra-portable PA system** for you: meet the **MAUI® 5 GO**. Powered by a **high-capacity Li-Ion battery**, the **MAUI® 5 GO** allows you to **play your music wherever you feel like**. And thanks to optional, **quick-swappable battery packs**, you can also play as long as you like. Now nothing can hold you back – **so GO play outside!**



A man and a woman are dancing on a beach at sunset. The man, on the left, is wearing a white tank top with a circular logo and sunglasses. The woman, on the right, is wearing a black top with white lace and has her arms raised in the air. The background shows the ocean and a bright sunset sky.

play wherever you like.
play as long as you like.



GO LOUD AND CLEAR

With 800 watts of class D peak power, the MAUI® 5 GO covers audiences of a 100 and more, hands down. We've added our proprietary LECC® processing to ensure immaculate audio quality and speech intelligibility even at maximum levels.

LITHIUM ION BATTERY

FOR UP TO 20 HOURS OF MUSIC

LINE ARRAY

OF FOUR 3" MID/HI SPEAKERS FOR DETAILED MIDS AND CRYSTAL CLEAR HIGHS

8" SUBWOOFER

FOR PUNCHY BASS DOWN TO 50Hz



GO FOR HOURS

The high-capacity LG Chem lithium-ion battery element provides up to 20 hours of uninterrupted operation - it all depends on how much you turn up the MAUI® 5 GO. And it takes only 3 hours to fully recharge the battery!



20 hours

LOUNGE MODE / 96 dB



10 hours

LIVE MUSIC / 104 dB



6 hours

DJ MODE / 120 dB



GO FOREVER

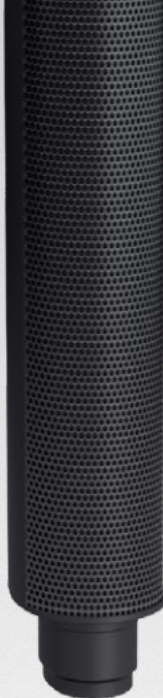
WITH PATENTED
QUICK-SWAP TECHNOLOGY

The MAUI® 5 GO is capable of performing without time limit. Simply quick-swap the drained battery for a fully charged replacement battery in just a few seconds, recharge the drained unit using the optional charging dock, and you're good to go forever.



PLUG, PLAY AND CHARGE
VIA INTEGRATED
SMART CHARGING ELECTRONICS





UNLIMITED BATTERY POWER

Recharge battery packs with the optional charging dock while your MAUI® 5 GO keeps performing - no need for the subwoofer's built-in charger.



GO LIGHTWEIGHT

ULTRA-PORTABLE DESIGN

WEIGHING UNDER 13 KG / 29 LBS

We've chosen high-impact ABS for the system's shell to provide durability and light weight - after all, we've designed the MAUI® 5 GO to be out and about! And the 4-piece construction is as easily assembled as it is to carry around.





A romantic couple is silhouetted against a bright, hazy sunset. The man, wearing a dark t-shirt and a fedora, holds a glass of white wine. The woman, with long blonde hair and wearing a dark floral dress, leans in towards him. They are on a balcony with a wooden railing, overlooking a lush green hillside dotted with houses and a distant coastline under a golden sky. The text "ready to go" is overlaid in white on the right side of the image.

ready to
go



GO VERSATILE

EASILY CONNECT
ALL YOUR INPUT SOURCES

With Bluetooth® audio streaming and inputs for music playback, microphones and instruments, the MAUI® 5 GO is ready for live performances, recorded music and speeches where power outlets are not available.



INPUT
LEVEL

HOLD
TO LINK

MP3

HI-Z

HI-BOOST

SUB
LEVEL

MIC

MAIN
LEVEL

MONO
STEREO

SYSTEM

ON

SIGNAL

LIMIT

PROTECT

SYSTEM
OUTPUT
MONO (L/R)
STEREO (R/L)

INPUT



A man with a beard and a baseball cap is shown in profile, playing an acoustic guitar. He is wearing a dark t-shirt and a necklace. The guitar has a "CARTER" logo on the headstock. The background is a lush, green outdoor setting with trees and a brick wall.

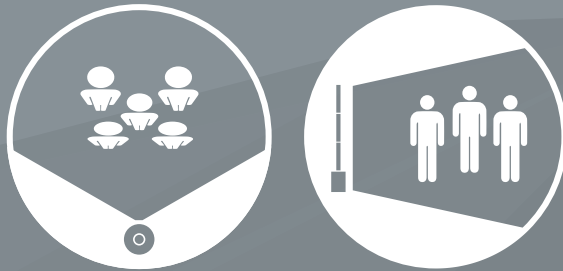
all-in-one sound

reinforcement
and monitoring
system

GO FURTHER

AND FORGET ABOUT MONITOR SPEAKERS

Utilizing the line array principle, the long throw, wide dispersion and outstanding feedback resistance of the MAUI® 5 GO make it the perfect all-in-one sound reinforcement and monitoring solution for those on the go.



The image shows two black MAUI 5 GO speakers standing side-by-side. Each speaker has a tall, thin vertical pole attached to its top. The rear of the speakers is visible, showing various ports and a control panel. A black cable is connected between the two units, likely for stereo pairing. The background is a light gray with abstract geometric shapes.

GO STEREO

WITH THE PUSH
OF A BUTTON

Pairing two MAUI® 5 GO units for stereo operation is as easy as pushing a button. A preset selector performs the necessary configuration, and all you need to do is hooking up a cable for a full and ambient stereo sound.

MAUI® 5 GO



MAUI® 5 GO W



MAUI® 5 GO

ULTRA-PORTABLE BATTERY-POWERED COLUMN PA SYSTEM

SPECIFICATIONS:

System power (RMS / peak):	200 W / 800 W
Battery capacity:	20 h @ 98 dB (Lounge mode), 10 h @ 104 dB (Live music), 6 h @ 120 dB (DJ mode) / 5,200 mAh, 29.6 V
Battery technology:	LG Chem lithium-ion battery
Battery charging:	Via subwoofer or optional charging dock, 2 h to 80% capacity, 3 h to 100% capacity
Frequency response:	50 Hz - 20 kHz
Max. SPL (peak):	120 dB
Protection:	DSP multiband limiter plus short circuit, overcurrent and thermal protection
Controls:	Main level, subwoofer level, hi boost, mic level, hi-Z level, line level, MP3/Bluetooth® level, Bluetooth® link, on/off switch, mono/stereo switch
Input & output connectors:	2 x XLR/6.35 mm combo line inputs, XLR/6.35 mm combo mic input, 3.5 mm MP3 input, 6.35 mm hi-Z input, XLR system out
Power inlet:	IEC
Operating voltage:	AC 100-120V, 50/60Hz / AC 200-240V, 50/60Hz
Temperature range:	0° - 50° C
Humidity range:	10% - 70% rel. (non condensing)
Weight:	12.9 kg / 29 lbs (incl. battery)
Features:	Battery powered, quick-swap technology (patent pending), LD Systems LECC® DSP (limiter, equalizer, compressor, crossover), hi-boost, 100 Hz low cut on mic input, multipin connectors for easy assembly, Bluetooth® stereo audio streaming
Optional accessories:	Replacement battery pack, charging dock, column transport bag, subwoofer protective cover

GO INFINITE

DAISY-CHAIN AS MANY AS YOU NEED

Need to cover larger audiences and listening areas? It's dead easy to daisy-chain any number of MAUI® 5 GO units for a quasi-distributed mono system that's perfect for block parties and any event without regular power outlets.

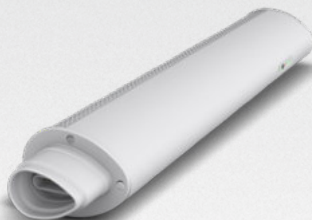




AVAILABLE **ACCESSORIES**



BATTERY PACK
MAUI® 5 GO BC



BATTERY PACK WHITE
MAUI® 5 GO BCW



CHARGING DOCK
MAUI® 5 GO CD



**COLUMN
TRANSPORT BAG**
MAUI® 5 SAT BAG



PROTECTIVE COVER
FOR MAUI 5 GO SUBWOOFER
MAUI® 5 SUB PC



MAUI® 5 GO

ULTRA-PORTABLE BATTERY-POWERED
COLUMN PA SYSTEM



DESIGN
AWARD
WINNER



reddot award
winner

DESIGNED & ENGINEERED IN GERMANY

LEARN MORE AT

LD-SYSTEMS.COM/MAUI5GO



4 049521 228445



LD Systems®
is a brand of



adam hall
experience
event technology

SOUND
TECHNOLOGY

LIGHT
TECHNOLOGY

STAGE
EQUIPMENT

HARDWARE
FOR FLIGHTCASES

share the experience at
adamhall.com