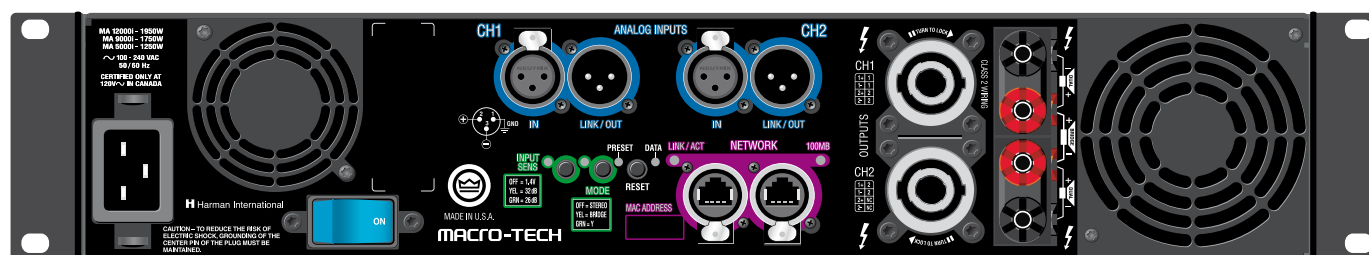




# Macro-Tech® i Series

## Macro-Tech 5000i, 9000i, 12000i power amplifiers for touring sound



### Power Output Guaranteed minimum power in watts at 20 Hz-20 kHz with 0.1% THD

	2-ohm Dual (per ch.)						
Model Name	20 mS BURST	20 Hz - 20 kHz	1 kHz	4-ohm Dual (per ch)	8-ohm Dual (per ch)	4-ohm Bridge	8-ohm Bridge
<b>MA-5000i</b>	<b>3,000W</b>	2,000W	2,000W	2,500W	1,250W	4,000W	5,000W
<b>MA-9000i</b>	<b>4,700W</b>	2,800W	2,800W	3,500W	1,500W	5,600W	7,000W
<b>MA-12000i</b>	<b>6,000W</b>	3,750W	3,750W	4,500W	2,100W	7,500W	9,000W

### Features

- The Macro-Tech® i Series continues the Crown® Macro-Tech legacy of unparalleled sonic accuracy and detail, putting sound quality above all else
- Patented, cutting-edge Class-I circuitry gets more power out of an amplifier with less waste
- Rugged construction ensures that all Macro-Techs are built to withstand years of abuse on the road
- Global Power Supply — designed to deliver maximum power no matter what country you work in
- Built-in load, line voltage, input and output monitoring
- Standard Ethernet networking via System Architect® lets system operators monitor and control the amplifier from any location

# Macro-Tech® i Series

## Specifications

### Performance

**Frequency Response** (at 1 watt, 20 Hz - 20 kHz into 8 ohms):  $\pm 0.25$  dB.

**Signal to Noise Ratio** (below rated full-bandwidth power, A-weighted):  $> 112$  dB.

**Total Harmonic Distortion (THD)** (at 2 watts into 8 ohms):  $< 0.1\%$ .

**Total Harmonic Distortion (THD) Plus Noise** (at full rated power):  $< 0.1\%$ , 20 Hz to 20 kHz.

**Intermodulation Distortion (IMD)** (60 Hz and 7 kHz at 4:1, from full rated output to  $-30$  dB):  $< 0.35\%$ .

**Damping Factor** (20 Hz to 100 Hz at 8 ohms):  $> 5000$ .

**Crosstalk** (below rated power, 20 Hz to 1 kHz):  $> 80$  dB.

**Common Mode Rejection (CMR)** (20 Hz to 1 kHz):  $> 70$  dB typical.

**DC Output Offset** (shorted input):  $< \pm 3$  mV.

**Input Impedance** (nominal): 20 kilohms balanced, 10 kilohms unbalanced.

**Maximum Input Level:**  $+20$  dBu typical.

**Network:** Onboard HiQnet™, compatible with standard 100 Mb Ethernet hardware.

**Load Impedance:** (Note: Safe with all types of loads)  
Stereo: 1/2/4/8/16 ohms.  
Bridge Mono: 2/4/8 ohms.

**Input Sensitivity** (referenced to 8 ohm rated output): 1.4V, 32 dB gain, and 26 dB gain.

**Voltage Gain** (referenced to 8 ohm rated output):  
MA-5000i: 37.1 dB to 22.2 dB  
MA-9000i: 37.9 dB to 23.0 dB  
MA-12000i: 39.3 dB to 24.5 dB

**Required AC Mains:** Universal AC input, 100-240VAC ( $\pm 10\%$ ), 50/60 Hz. Maximum AC mains voltage 264VAC.

**AC Line Connector:** Five cordsets supplied with amplifier (USA, UK, European, Australia, India).

### Front Panel Controls and Indicators

**Bridge Mode Indicator:** Amber LED illuminates when the amplifier is set to Bridge-Mono mode.

**Ready Indicator:** Green LED, one per channel.  
On (bright): Ready.  
On (dim): Onset of compression.  
Off: Thermal protection.

**Signal Indicators:** One green LED per channel.  
Solid green: Input signal is above  $-40$  dBu.  
Bright green: Channel's output signal has reached the onset of audible clipping.

**Power Indicator:** Blue LED indicates amplifier has been turned on and AC power is available. The

LED will flash when the AC line voltage is 10% above or below the nominal rated value.

**Data Indicator:** Yellow LED on front panel indicates network data activity. Data indicator flashes only when the amplifier is polled for data, or is polled to see whether it is online.

**Power Switch:** Push-on/push-off switch with built-in green AC mains present indicator.

**Volume Control:** Precision detented attenuator with 31 steps, press-and-hold mute function.

**Volume Control LED Ring:** A ring of green LEDs around each volume control show the position of the control. Entire ring flashes when channel is muted. Can be converted to be a level meter.

### Back Panel Controls, Indicators and Connectors

**Power Cord Connector:** Detachable 20 amp IEC inlet. Cord locks with supplied cord retention clip. Voltage range is indicated above IEC inlet.

**Reset Switch/Circuit Breaker:** If the current draw of the amplifier exceeds safe limits, this breaker automatically disconnects the power supply from the AC mains. The switch resets the circuit breaker.

**Output Connectors:** Two high-current, 50A Neutrik® Speakon® NL4MLP (mates with NL4FC or NL4), one per channel. Ch 1 Speakon® is wired with Ch 1 and Ch 2 outputs for use with single 4-conductor cable. Two pairs of high-current, 60A color-coded 5-way binding posts (for banana plugs, spade lugs or bare wire).

**Analog Input Connectors:** A 3-pin female XLR connector for each channel.

**Analog Loop Thru Connectors:** Two male XLR passive analog loop through.

**Mode Switch/Indicator:** Sets amplifier to Stereo, Bridge, or Input Y mode. OFF=Stereo, YEL=Bridge, GRN=Y.

**Network Connectors:** This Neutrik® EtherCon® connector accepts an RJ-45 connector for HiQnet™ networking. Next to the connector is a yellow LINK ACT indicator that shows network activity, and a green 100Mb indicator that shows a 100Mb network connection.

**Data Indicator:** Yellow LED on back panel indicates network data activity. Data indicator flashes only when the amplifier is polled for data, or is polled to see whether it is online.

**Preset Indicator:** Green/yellow LED flashes to signal the number of the current preset. LED is green if current preset is active, or is yellow if current preset is modified.

**Input Sensitivity Switch:** Three-position switch providing 1.4V, 32 dB, and 26 dB settings for both channels.

## Firmware/Software

Firmware can be downloaded at <http://hiqnet.harmanpro.com>.

**Software features:** User Presets, Clip Event Monitor, Input Signal Level Monitor, Output Signal Level Monitor, Thermal Headroom Level Monitor, Power/Standby Control, Signal Mute, Polarity Inverter, Input Signal Fader, Amplifier Information, User and Channel Labels, Amplifier Mode, Amplifier Output Mode, Line Voltage Monitor, Error Reporting, Auto Standby, Input Signal Compressor/Limiter, Peak Voltage Limiter, Average Power Limiter, Clip Eliminator, Thermal Limiter, Limiter Tie, Load Supervision.

## Construction

**Cooling:** Dual-zone, microprocessor controlled, continuously variable speed fans, front-to-back airflow.

**Front Panel:** Cast aluminum with integrated handles.

**Dimensions:** 19 in. (48.3 cm) W x 3.5 in. (8.9 cm) H x 16.2 in. (41.1 cm) D.

**Weight:** 28 lbs (12.7 kg) net, 36 lbs (16.3 kg) shipping.

**Protection:** Amplifier is protected against reactive loads, faults and shorts. If one channel experiences a catastrophic failure, the entire amplifier will shut down.

**Included Accessories:** Rear rack ears, rack screws, operation manual, power cords, foam air filter.

Note: All measurements apply to units in Stereo mode with 8-ohm loads and rated input sensitivity unless otherwise specified.



Crown International  
1718 W. Mishawaka Rd.  
Elkhart, IN 46517-9439  
TEL: 574-294-8200  
FAX: 574-294-8FAX  
Customer Service: 800-342-6939  
or 574-294-8200.  
[www.crownaudio.com](http://www.crownaudio.com)

Specifications subject to change without prior notice. Latest information available at [www.crownaudio.com](http://www.crownaudio.com).

Crown, Macro-Tech and Crown Audio are registered trademarks. HiQnet is a trademark of Harman International Industries, Inc. Other trademarks are the property of their respective owners. Printed in U.S.A.

© 2008 Crown Audio® Inc