

Bowers & Wilkins

PX7  
Wireless  
Headphones

## Welcome to Bowers & Wilkins and PX7

Thank you for choosing Bowers & Wilkins. When John Bowers first established our company, he did so in the belief that imaginative design, innovative engineering and advanced technology were keys that could unlock the enjoyment of audio in the home. His belief is one that we continue to share and inspires every product we design, tailored for new audio experiences outside of the home.

The Bowers & Wilkins PX7 are high performance over-ear headphones designed to deliver the highest quality mobile personal audio experience combined with the convenience of wireless operation and the serenity of noise-cancellation. This manual will tell you everything you need to know to get the most from your PX7 headphones.

Your PX7 can play music streamed wirelessly from your mobile phone, tablet or computer via Bluetooth, or conventionally connected by a jack cable to a suitable analogue headphone output. PX7 can also play audio via a USB connection from a computer and can be used for wireless telephony.

PX7 Real World Listening features include our latest innovations in Adaptive Noise Cancellation, Ambient Pass-Through and enhanced Wear Sensing technologies. Our latest generation noise cancellation feature was designed from the ground up with intelligent environment sensing capabilities, automatically selecting the appropriate type of noise cancellation best suited to your surrounding environment, its only goal is to deliver an uncompromised listening experience. Ambient Pass-Through enables external sounds, such as conversation or safety announcements, to be heard clearly without any need to remove the headphones. The Wear Sensing feature enables PX7 to respond naturally, pausing and resuming the music simply by lifting either earpiece on or off your ear. These features can be enabled and further customised via the Bowers & Wilkins Headphone App available for free on iOS and Android devices.

PX7 incorporates a rechargeable battery pack. When fully charged, depending on the degree of Bluetooth, Adaptive Noise Cancellation and Ambient Pass-Through use, the battery pack can provide up to 30 hours of continuous wireless media streaming with noise cancellation enabled at average playback volume levels.

## 1. PX7 Carton Contents

PX7 headphones  
Storage case  
USB-C charging cable  
3.5mm audio cable  
Document pack

## 2. Getting to know your PX7

### 2.1 Switching Headphones On and Off

Diagram 1 illustrates power switch functionality.

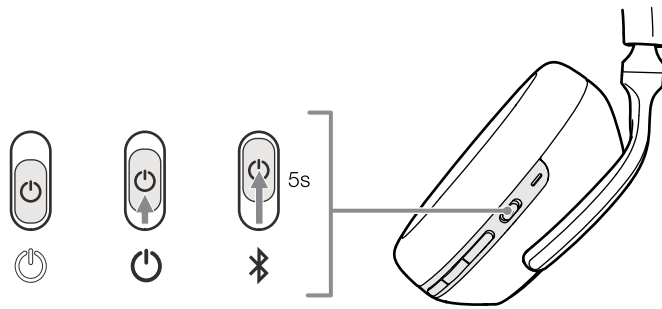


Diagram 1  
Power switch functionality

#### Switching On

The Power Switch is located on the right earpiece. Slide the Power Switch up to the middle position. An audible cue will be presented and the LED indicator will light up in either green, amber or red displaying the current charge level.

#### Switching Off

Slide the Power Switch to the bottom position. An audible cue will be presented and the headphones will power down when the LED indicator is no longer lit.

### 2.2 Headphone Controls

Diagram 2 illustrates the headphone controls. The following buttons on the right earpiece are used to for media playback:

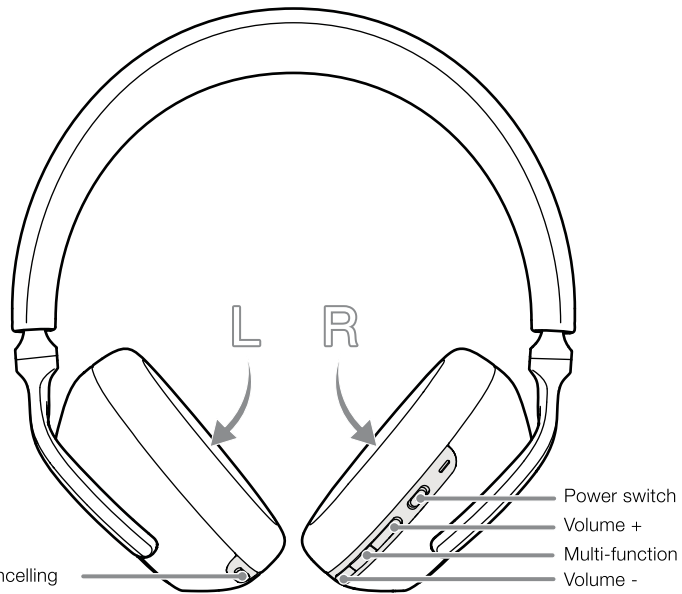


Diagram 2  
Headphone controls

Function	Action
Play or pause	Press the Multi-function button once.
Play to next track	Press the Multi-function button twice in quick succession. <i>Note: functionality dependent on source device.</i>
Play previous track	Press the Multi-function button three times in quick succession. <i>Note: functionality dependent on source device.</i>
Increase Volume	Press the Volume + button.
Lower Volume	Press the Volume - button.

The following buttons on the right earpiece are used for phone call functionality:

Function	Action
Answer or end call	Press the Multi-function button once.
Answer an incoming call	When incoming call occurs, press the Multi-function button once.
Decline an incoming call	When incoming call occurs, hold the Multi-function for 2 seconds.
Switch between two calls	With two calls active, press the Multi-function button twice.
Merge two calls	With two calls active, hold the Multi-function button for 1 second.
Toggle mute	While on a call, press the Multi-function button three times.

### 2.3 Status Indicator

The status LED indicator is located on the right earpiece, Diagram 3 explains the illumination states.

Illumination	Operational state
White	Battery charge > 30%
Amber	Battery charge between 30% and 10%
Red	Battery charge < 10%
Red flashing	Battery charge insufficient for headphone operation
Blue flashing	Pairing mode enabled
Blue (2 sec solid)	Pairing successful
Blue flashing (calls)	Incoming call
Green flashing	Rapid charging
Green solid	Battery charge full, trickle charging

Diagram 3  
Status indicator illuminations

### 3. Intelligent Features

#### 3.1 Adaptive Noise Cancellation

Noise cancellation is a series of advanced technologies that aids in removing undesired noise from the surrounding environment.

PX7 features our latest innovations in adaptive noise cancellation, this includes intelligent sensing that adapts noise cancellation and tuning best suited to your surrounding environment. As your surroundings change, noise cancellation will auto adapt to complement your new environment.

The Noise Cancellation button on the left earpiece is used to cycle between the following modes, see Diagram 2 for button location:

Mode	Application
High	Suitable for consistently noisy environments such in an airplane cabin.
Low	Suitable for environments where you need awareness of your surroundings.
Auto	Intelligently adapts noise cancellation best suited to your current environment.
Off	Turns off the noise cancellation feature.

#### 3.2 Ambient Pass-Through

PX7 features ambient pass-through which lets some external noise from the surrounding environment, such as safety announcements or conversations, to be heard without taking the headphones off.

The Noise Cancellation button on the left earpiece also controls this feature, see Diagram 2 for button location.

Function	Action
Enable ambient pass-through	Press and hold the Noise Cancellation button for 2 seconds.
Disable ambient pass-through	With ambient pass-through enabled, either hold down or single press the Noise Cancellation button for 2 seconds, the headphones will return to the previous noise cancellation mode

The level of ambient pass-through can be further customised to suite your needs using the Bowers & Wilkins Headphones App.

#### 3.3 Wear Sensors

PX7 incorporate our latest enhanced wear detection sensors in both earpieces, see Diagram 4, enabling intelligent battery conservation by entering standby when removed from the head. When worn again, PX7 automatically wakes and connects to the last connected Bluetooth device.

During media playback, PX7 will auto pause when either earpiece is lifted from the ear. Playback will auto resume when the earpiece is placed back on the ear. Auto resume has been further optimised so it is ready only when you are. This means the headphone will not attempt to resume playback during following conditions:

1. Headphone powers on from the off state.
2. Headphone wakes from the standby state.
3. Headphone reboots (such as after a factory reset).

Wear sensor and standby can be adjusted using the Bowers & Wilkins Headphones App.

*Note: Take care when wearing your headphones; hair or accessories trapped between your ears and the earpieces, or wearing glasses that distort the profile of your ears, may interfere with the performance of the proximity sensors.*

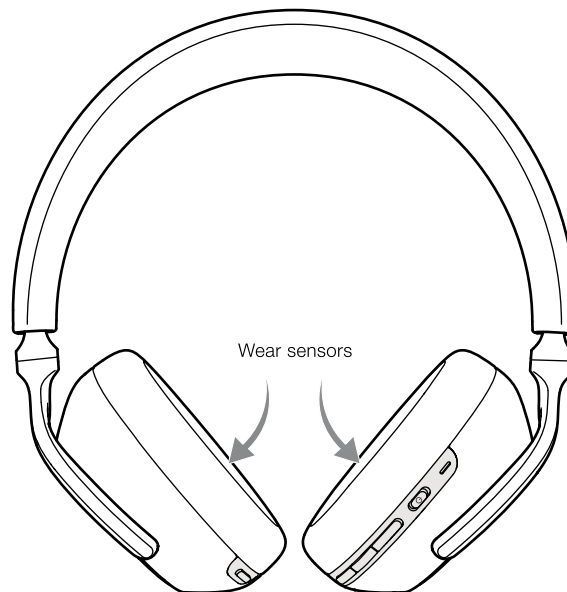


Diagram 4  
Wear sensor location

## 4. Battery Charging and Power Saving

Your PX7 comes with the battery partially charged and may be used immediately. For best practice we recommend to fully charge the headphones before first use. Please allow up to 3 hours for full charge. The headphones can be used while charging.

To charge:

1. Please use the supplied charging cable and connect the USB-A plug to a wall charger or a powered computer USB-A socket.
2. Then connect the USB-C end to the headphones USB-C socket

*Note: During charging, the headphone indicator will flash green. When fully charged, the indicator will remain illuminated. See Diagram 3 for status indicator details.*

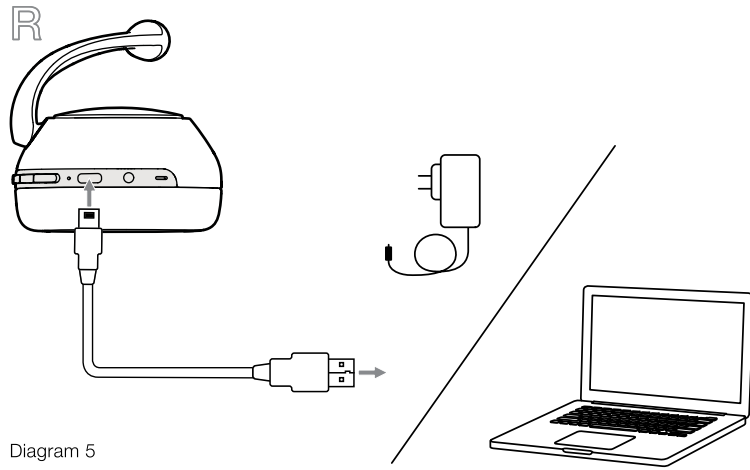


Diagram 5  
USB-C cable connection

### 4.1 Standby Power Saving

PX7 wear detection sensors intelligently conserve power. When taken off your head, PX7 will automatically enter standby which will pause media playback, disconnect Bluetooth and switch to a low power state.

When worn again, PX7 will wake and reconnect to the last connected Bluetooth source. Note that both earpieces must detect wear for proper functionality. If wear sensors are disabled using the app, this feature will also be disabled.

With the app, you can customise how long the headphones will wait before switching to auto standby, please see Standby Timer under Settings in the app.

## 5. Wearing Your Headphones

Wearing your headphones correctly will help ensure the best possible experience. See Diagram 6.

1. Identify the left and right earpieces by finding the identification legends located on the interior of each earpiece.
2. Wear the headphones accordingly with the headband adjusted so that they rest comfortably on your head.

*Note: Wearing glasses that distort the profile of your ears may interfere with headphone performance. Similarly, hair trapped between your ears and the headphone ear-pieces may interfere with the wear sensor performance.*

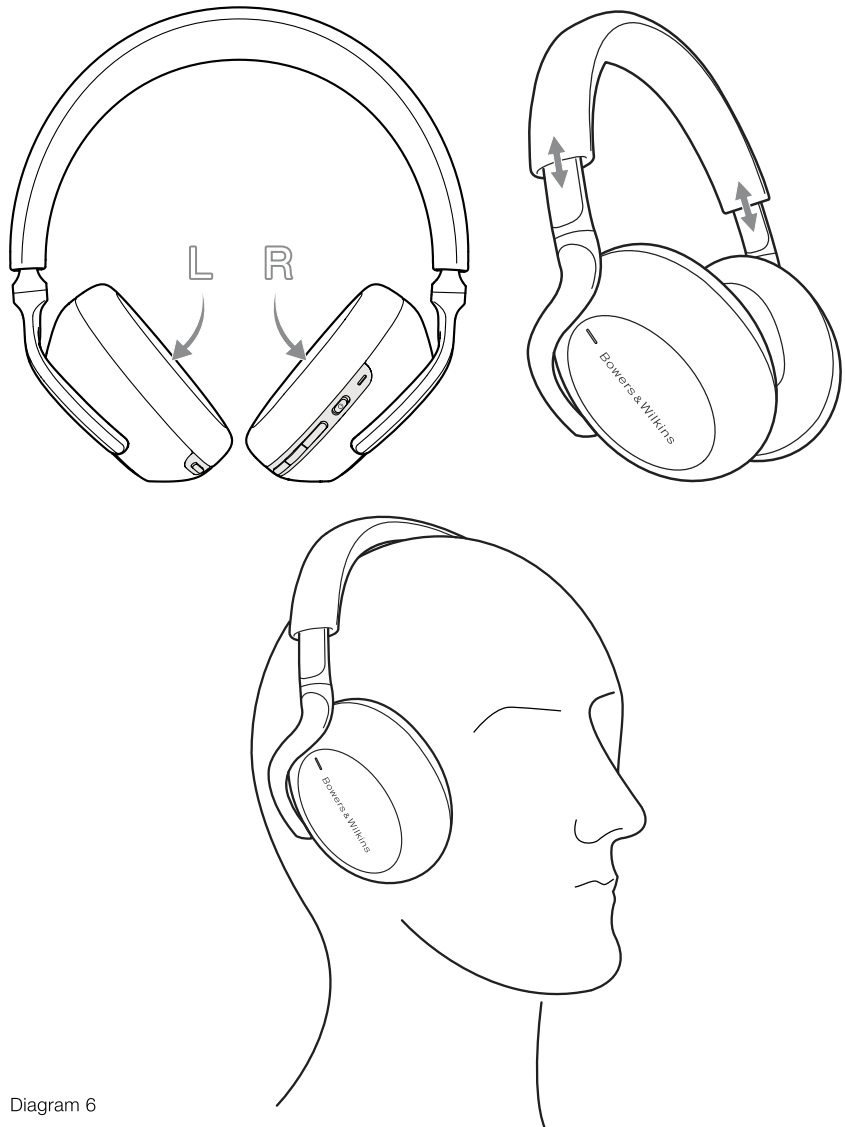


Diagram 6  
Wearing your headphones

## 6. Bluetooth Connection

### 6.1 Pairing

PX7 is designed to stream media wirelessly from Bluetooth audio devices, such as smartphones, tablets or personal computers. To do so, the headphone and device (source) must first be paired.

1. The first time you switch on your headphones, Bluetooth pairing mode will be enabled, the indicator will flash blue. If pairing mode is not enabled, please slide and hold the power switch to the upper (Bluetooth Icon) position for 5 seconds, let go when the indicator blinks blue and when an audible cue is presented.
2. Ensure the Bluetooth feature is enabled on the audio device, PX7 will appear in the discovery list, select it to pair.
3. The indicator will flash blue while pairing is in progress, this will change to solid blue and an audible cue presented when pairing is successful.

Your headphones will remember up to eight paired Bluetooth devices. Repeat the above steps to pair more devices.

*Note: Your headphones will automatically exit Bluetooth pairing mode if no device is paired within 5 minutes. If pairing fails, the indicator will rapid flash blue, please try pairing again.*

### 6.2 Multiple Bluetooth Connections

PX7 can connect up to two devices at the same time, but note that you can only play audio or take calls from one device at a time.

To switch between two devices:

1. Pause audio on the first device, or use the PX7 multi-function button.
2. Play audio from the second device and the headphone will switch over.

When streaming audio, receiving a call on the second device will automatically pause playback and the call will be routed automatically to your headphones. Ending the call will automatically resume playback from the first device.

### 6.3 Disconnect from a Device

You can quickly disconnect PX7 from a device by sliding the Power Switch to the upper (Bluetooth Icon) position two times in quick succession, an audible tone will be presented indicating successful disconnection.

Alternatively, you can manage connection in further detail using the Bowers & Wilkins Headphones app under Connections.

### 6.4 Setting Up Headphones with the App

The Bowers & Wilkins Headphones app provides extended setup and adjustments to features such as Adaptive Noise Cancellation, Ambient Pass-Through, and Wear Sensors. The app also provides further customisations such as voice prompt, standby time, connection management and headphone software updates. The app is available as a free download on iOS and Android devices.

To add your headphones:

1. From your mobile device, download and install the Bowers & Wilkins Headphones app.
2. Launch the app, then read and follow the instructions pertaining app notification and permissions.
3. After reaching the main screen, simply tap + and following the in-app instructions.

### 6.5 Headphone Software Updates

Bowers & Wilkins will occasionally make available software updates that refine and optimise the performance of your headphones or add new features.

The Bowers & Wilkins Headphones app will notify you when a software update is available, tap on the notification and the follow in-app instructions.

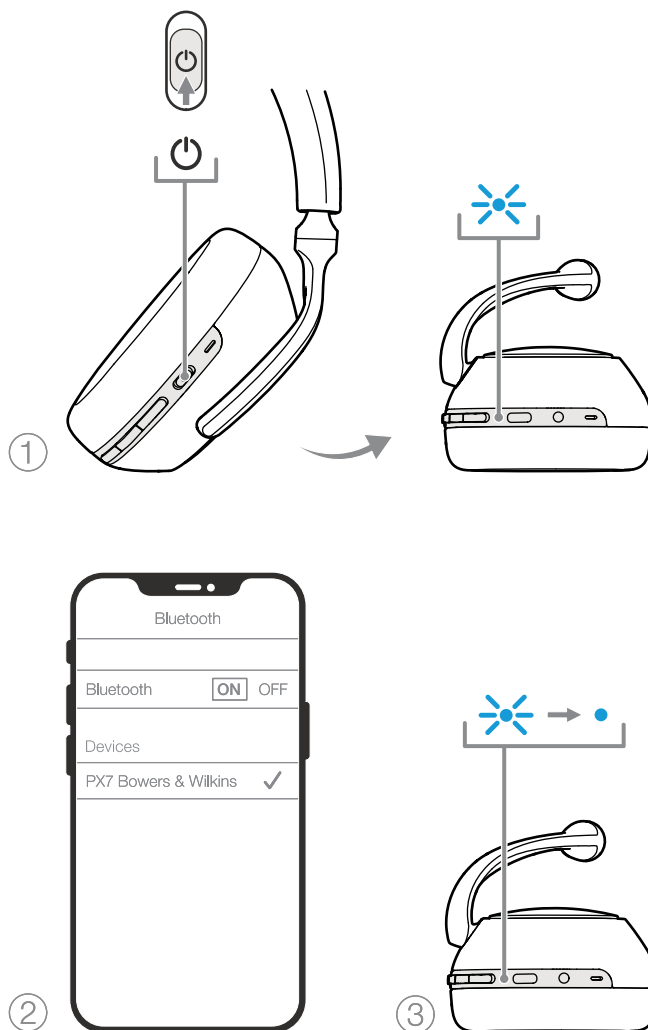


Diagram 7  
Bluetooth pairing

## 7. Auxiliary Connection

In addition to Bluetooth, your PX7 can also connect to audio sources using the supplied 3.5mm audio or USB cables.

### 7.1 Connecting with the 3.5mm Audio Cable

The 3.5mm audio cable enables your PX7 to be used with a device supporting an analogue output such as a conventional headphone socket on smartphones or tablets, or a traditional hi-fi system. See Diagram 8.

1. Insert the 3.5mm audio cable into the headphone 3.5mm socket on the right ear piece.
2. Take the other end and insert into the appropriate socket on your device.
3. Your PX7 will automatically disconnect from any Bluetooth devices.

*Note: Your headphones must have sufficient charge and switched on to play audio from an analogue source device. The volume and play/pause buttons will not function when using the 3.5mm interface.*

### 7.2 Connecting with the USB Cable

USB connection enables your PX7 to function as a USB sound output device when connected to a capable computer.

1. Insert the USB-C end into the PX7 USB-C socket on the right ear piece.
2. Take the USB Type A end and insert into the appropriate socket on your computer.
3. PX7 will automatically disconnect from any Bluetooth devices.
4. Find and select your headphones from the computer's audio output control panel.

*Note: When connected to an capable computer USB port, the headphone battery will also charge.*

## 8. Power Cycle and Reset

### 8.1 Power Cycle

You can power cycle your PX7, simultaneously hold the Volume + and Volume - buttons for 10 seconds until the indicator LED extinguishes, let go when the indicator lights up again. Rebooting your headphones will not reset their internal settings or clear the paired device history.

### 8.2 Reset to Default

You can clear the paired device history and restore all settings to their defaults. With PX7 powered on, simultaneously hold the Volume +, Volume - and Noise Cancellation buttons for 10 seconds until the indicator LED extinguishes, let go when the indicator lights up again, the headphones will be ready to pair to a device. Alternatively, you can reset from the Bowers & Wilkins Headphones app, please see Reset under Settings in the app

## 9. Care & Maintenance

### 9.1 Storing Your PX7

Taking care of your PX7 will ensure they continue to deliver the best performance and experience.

When not used, stow your headphones using the included storage pouch. It is recommended the headphones are first powered off:

1. Retract the headband on each side so they are in the smallest position.
2. With the buttons facing you, rotate the earpieces inwards so they lay flat.
3. Place the headphones in to the storage case.

### 9.2 Cleaning Your PX7

Your PX7 can be cleaned by a soft, damp microfiber cloth, gently wipe or dab clean.

The fabric on PX7 have been specially coated with moisture and stain repellent. If dirt, stain or fibre residue accumulate on the fabric surface, please clean as instructed above.

- Do NOT aggressively rub or use an abrasive tool to clean, especially the fabric.
- Do NOT use paper towels, napkins or tissue as they will leave residue.
- Do NOT use cleaning detergents, soapy water, polish or chemical cleaners.
- Ensure that no moisture get inside the earpieces, buttons and interface ports.

## 10. Support

Should you require further help or advice regarding your PX7 please visit the Headphones support site here [www.bowerswilkins.com/support](http://www.bowerswilkins.com/support).

### Environmental Information

This product complies with international directives, including but not limited to the Restriction of Hazardous Substances (RoHS) in electrical and electronic equipment, the Registration, Evaluation, Authorisation and restriction of Chemicals (REACH) and the disposal of Waste Electrical and Electronic Equipment (WEEE). Consult your local waste disposal authority for guidance on how properly to recycle or dispose of this product.

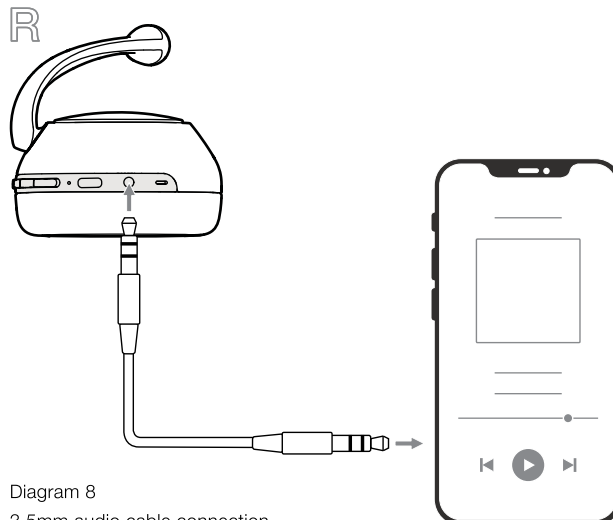


Diagram 8  
3.5mm audio cable connection

## Specifications

Wearing Style	Bluetooth Wireless Over-Ear Headphones
Technical Features	Adaptive Noise Cancellation Ambient Pass-Through Wear-Detection Sensor Bluetooth® audio - Bluetooth 5.0 with aptX™ Adaptive USB-C charging & audio interface 3.5mm auxiliary audio interface
Bluetooth Codecs	aptX™ Adaptive aptX™ HD aptX™ Classic AAC SBC
Bluetooth Profiles	A2DP v1.3.1 AVRCP v1.6.1 HFP v1.7.1 HSP v1.2 BLE GATT (Generic Attribute Profile)
Drive Units	2 x ø 43.6mm full range
Microphones	4x mics for ANC 2x mics for telephony (CVC2 – Clear Voice Communication v2)
Frequency Range	10Hz to 30kHz
Input Impedance	20 kOhms
Distortion (THD)	<0.3% (1kHz/10mW)
Battery Type	Rechargeable Lithium Polymer
Battery Life & Charging	30 hrs Bluetooth with ANC, 5hrs with 15min charge
Inputs	Bluetooth, 3.5mm stereo jack, USB-C audio
In Box Accessories	1.2m stereo audio cable, 1.2m USB-A to USB-C cable, Storage Case
Weight	310 grams