



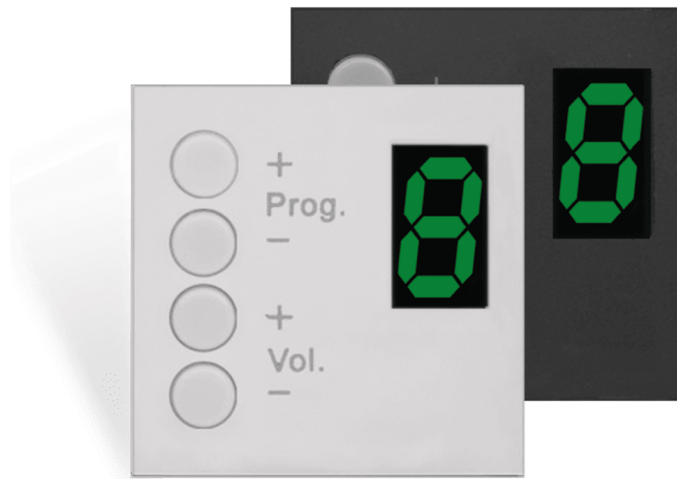
DW3020

Wall panel controller 45 x 45 mm

The DW3020 is a flush mount wall panel controller designed to work in combination with the R2 or M2 amplifier. It can be installed in a separate zone, and gives the possibility to select the desired audio source and adjust the volume for the zone that it's applied to. The connection between the amplifier and the controller is made by using a standard 4-pin terminal block connector. The 45 x 45 mm size is compatible with AUDAC, Niko, Legrand and other standard 45 x 45 mm Mounting frames and cover plates.

Applications:

- Corporate spaces
- Residential



System specifications:

Control	RS-485
Connectors	4-pin Euro Terminal Block

Product Features:

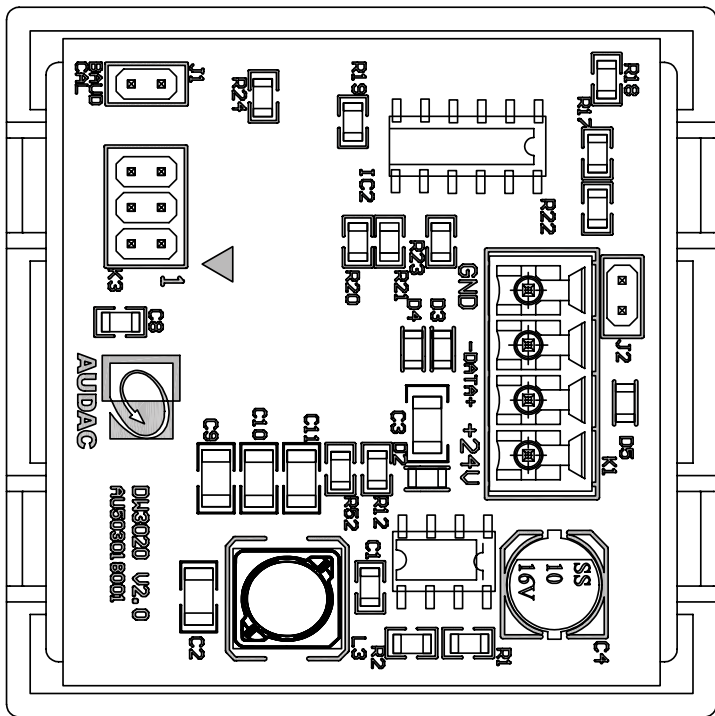
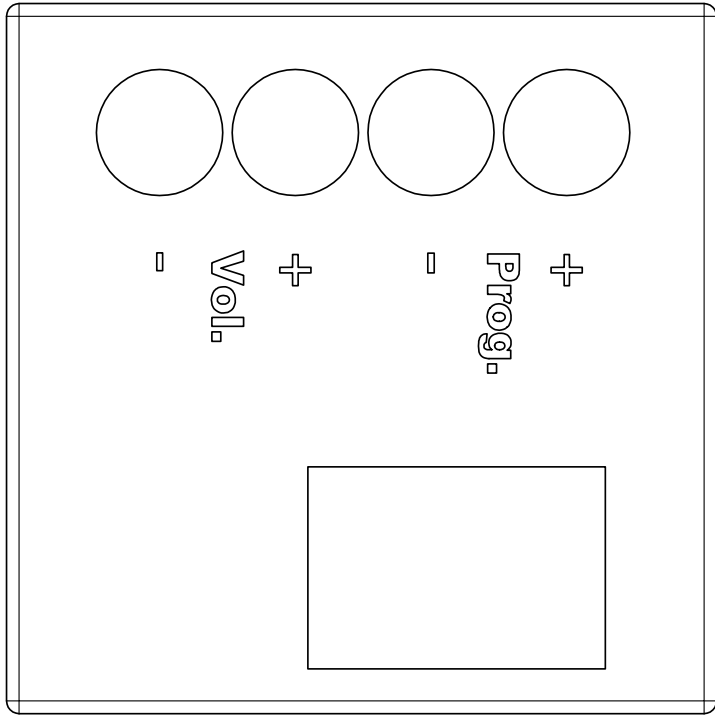
Dimensions	45 x 45 x 33 mm (W x H x D)
Weight	0.028 kg
Construction	ABS
Mounting	45 x 45 mm
Colours	Black (RAL9005) (DW3020/B) White (RAL9010) (DW3020/W)
Accessories	Optional CP45CF1 Cover frame CP45CF2 Cover frame

Variants:

- DW3020/B - Black version
- DW3020/W - White version

Shipping & Ordering:

Packaging Cardboard box



<p>DW3020</p>	<p>Product description: WALL PANEL CONTROLLER 8 ZONES FOR 45X45 STANDARD</p>	<p>Unit height: N/A</p>
<p>Weight: 28 g</p>	<p>Outer dimensions: (w x h x d) 45 x 45 x 33</p>	<p>Unit height: N/A</p>