



# ANX44

## Dante audio network interface 4 in / 4 out

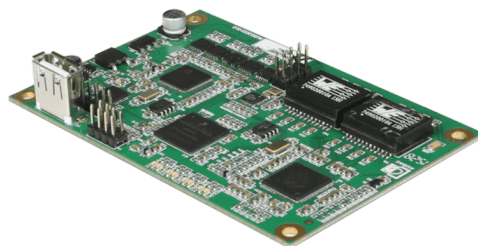
The ANX44 is a Dante audio network interface for installation in the XMP44 professional modular audio system, featuring four input and four output channels. The installation of this optional module allows the XMP44 to be integrated into any DANTE enabled AV network and flawlessly transfer digital audio with any compatible product on the market.

The bidirectional audio exchange with the 4 SourceCon™ interface card slots allows distribution of the audio stream from the installed modules, allowing any radio tuner, media player, internet radio or other audio source distribution throughout your Dante network.

A true plug & play solution is created when linking multiple DANTE enabled devices with each other on a standard IP network. It offers self-configuring solutions by using DHCP configuration, while the connection can be made to any existing 100 Mbit or 1 Gbit network infrastructure.

Bidirectional signal transmissions with a sampling frequency of 48 kHz and a bit depth of 24 bit are simultaneously possible on all in and output channels while guaranteeing an incredibly low latency with a maximum up to 5 ms. (depending on the network occupation).

The ANX44 comes delivered as an installation kit, including all required accessories for integration into the XMP44 chassis. Installation shall be performed by qualified technicians. Discover more about our modular audio players



### Applications:

---

- Clubs, bars, restaurants
- Retail
- Public facilities
- Houses of worship

### Variants:

---

- ANX44X - Dante audio network interface 4 in / 4 out

### Architects' and Engineers' Specifications:

---

The optional module shall be a Dante™ audio network interface allowing integration into the XMP44 modular audio system. It shall allow bidirectional and digital audio transfer of four input and four output channels with the SourceCon™ interface card slots, making the distribution of the audio coming from and to installed modules possible in any Dante enabled AV network. When implemented, a truly plug & play solution shall be offered for linking the modular audio system with multiple Dante™ enabled audio devices over existing 100 Mbit or 1 Gbit standard IP network infrastructure. The configuration shall be selfconfiguring and DHCP based. The signal transmission shall be bidirectional with a sampling frequency up to 48 kHz and a bit depth of 24 bit, while having a latency below 5 ms (depending of the network occupation). The network connection shall be made on the main unit whereto installed using a standard RJ45 connector and the module shall come as an installation kit, allowing implementation inside the modular audio system chassis.